

GRATINGS



ANSI/NAAMM MBG 531-00

February 21, 2001

METAL BAR GRATING
MANUAL
SIXTH EDITION

- **Maximum Bearing Bar Depth . . . 2½" (63.5 mm)**
- **Maximum Bearing Bar Thickness**
 - Steel & Stainless Steel 3/16" (4.8 mm)**
 - Aluminum ¼" (6.4 mm)**
- **Maximum Depth of I-Bar. 2½" (63.5 mm)**

MBG Metal Bar Grating Division of

THE NATIONAL ASSOCIATION OF ARCHITECTURAL METAL MANUFACTURERS



ANSI/NAAMM MBG 531-00

February 21, 2001



GRATINGS

Approval of an American National Standard requires verification by ANSI that the requirements for due process, consensus, and other criteria for approval have been met by the standards developer.

Consensus is established when, in the judgment of the ANSI Board of Standards Review, substantial agreement has been reached by directly and materially affected interests. Substantial agreement means much more than a simple majority, but not necessarily unanimity. Consensus requires that all views and objections be considered, and that a concerted effort be made toward their resolution.

The use of American National Standards is completely voluntary; their existence does not in any respect preclude anyone, whether he has approved the standards or not, from manufacturing, marketing, purchasing, or using products, processes, or procedures not conforming to the standards.

The American National Standards Institute does not develop standards and will in no circumstances give an interpretation of any American National Standard. Moreover, no person shall have the right or authority to issue an interpretation of an American National Standard in the name of the American National Standards Institute. Requests for interpretation should be addressed to the sponsor whose name appears on the title page of this standard.

CAUTION NOTICE: This American National Standard may be revised or withdrawn at any time. The procedures of the American National Standards Institute require that action be taken periodically to reaffirm, revise, or withdraw this standard. Purchasers of American National Standards may receive current information on all standards by calling or writing the American National Standards Institute.

This standard was developed by representative members of the Metal Bar Grating Division (MBG) of the National Association of Architectural Metal Manufacturers (NAAMM) to provide their opinion and guidance on the design and specification of metal bar gratings. This standard contains advisory information only and is published as a public service by NAAMM. NAAMM and its Divisions disclaim all liability of any kind for the use, application, or adaptation of material published in this standard.

Current information on all NAAMM Standards is available by calling or writing the National Association of Architectural Metal Manufacturers or by going to www.naamm.org.

METAL BAR GRATING MANUAL

For Steel, Stainless Steel, and Aluminum Gratings and Stair Treads

Sixth Edition

NAAMM MBG 531-00

Published and distributed by the

NATIONAL ASSOCIATION OF ARCHITECTURAL METAL MANUFACTURERS

8 SOUTH MICHIGAN AVENUE CHICAGO, ILLINOIS 60603

NAAMM'S METAL BAR GRATING DIVISION

The members of the Metal Bar Grating Division of the National Association of Architectural Metal Manufacturers have supported the preparation of this Manual. All are producers and/or suppliers of products conforming to the standards and specifications contained herein. A copy of the Membership Roster of the Metal Bar Grating Division is available from NAAMM.

FOREWORD

The NAAMM Metal Bar Grating Manual provides architects and engineers with current technical data on bar gratings and stair treads of steel, stainless steel, and aluminum. The information contained is based on sound engineering principles and reflects practices recommended by leading manufacturers in the industry.

The first five editions of the manual have been widely used by the design professions. In preparing this sixth edition, the Metal Bar Grating Division of NAAMM has reviewed its contents in detail and has made revisions to reflect current practices.

The load tables in this edition are based on the design formulas and procedures found in MBG 534, Metal Bar Grating Engineering Design Manual, which was developed to provide a clearer understanding of the procedures used in the design of grating and treads.

Also included are metric equivalents as an aid to designers who must use the metric system. The system of metric measurement used is from IEEE/ASTM SI 10-1997, "Standard for Use of the International System of Units (SI): The Modern Metric System".

**VALUES EXPRESSED IN THIS MANUAL ARE IN BOTH INCH-POUND UNITS AND SI UNITS.
THE VALUES STATED IN INCH-POUND UNITS ARE TO BE REGARDED AS THE STANDARD.**

CONTENTS

| | |
|---|-----------|
| Standard Marking System | 4 |
| Standard Gratings | 6 |
| Minimum Sizes and Tolerances of Bars | 7 |
| Load Tables / Inch-Pound units | |
| Steel | 8 |
| Stainless Steel | 10 |
| Aluminum | 12 |
| Load Tables / SI units | |
| Steel | 9 |
| Stainless Steel | 11 |
| Aluminum | 13 |
| Anchoring Details | 14 |
| Installation Notes; Panel Dimensions | 15 |
| Installation Clearances | 16 |
| Standard Tread Nosings | 17 |
| Tread Dimensions and Details | 18 |
| Manufacturing Tolerances | 19 |
| Welding Standards | 20 |
| Grating Uses | 21 |
| Information to be Provided when Ordering | 22 |
| Standard Specifications | 23 |
| Code of Standard Practice | 24 |
| Glossary of Terms | 28 |

**STANDARD
MARKING
SYSTEM**

The marking system described here is the industry standard for identifying various types of bar grating. Leading manufacturers correlate their individual marking systems with this standard.

The standard marking system for metal bar gratings, as illustrated on the facing page, identifies five characteristics of the grating in the following order:

1 TYPE OF GRATING

The type of grating is indicated by a letter, as follows:

- W Welded (steel gratings only)
- P Pressure-locked
- R Riveted

(See Glossary for definitions of types)

2 BEARING BAR SPACING

Bearing bar spacing is designated by a number which indicates sixteenths of an inch.

For welded or pressure-locked grating this is the distance, in sixteenths of an inch, **center to center** of bars.

For riveted grating it is the distance, in sixteenths of an inch, **between bearing bar faces**.

3 CROSS BAR OR RIVET SPACING

Cross bar or rivet spacing is designated by a number which indicates inches.

For welded or pressure-locked grating this is the distance, in inches, center to center of cross bars. For riveted grating it is the distance in inches center to center of rivets, measured along a single bearing bar.

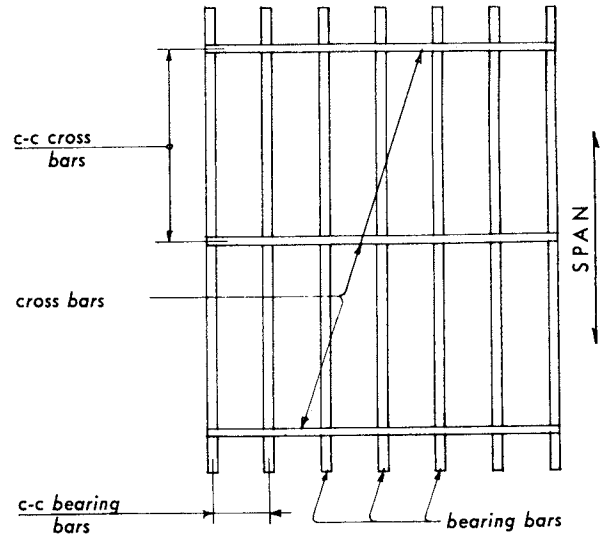
4 SIZE OF BEARING BARS *

The size of bearing bars is expressed in inches of depth and thicknesses as follows:

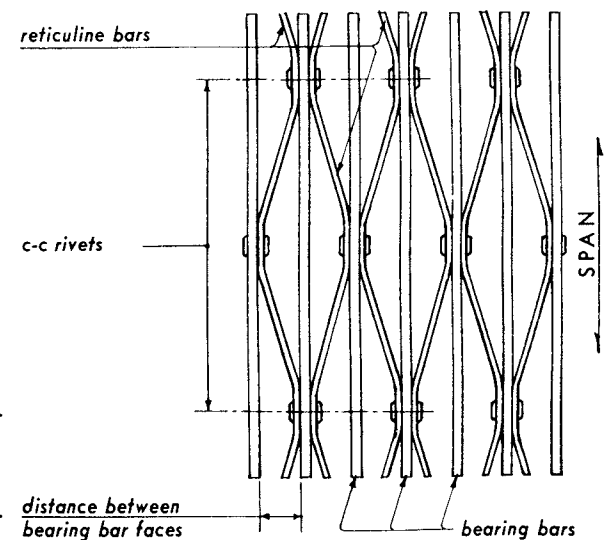
| Steel / Stainless Steel | | | Aluminum | | |
|------------------------------------|------------------------------------|------------------------------------|------------------------------------|------------------------------------|--|
| $\frac{3}{4} \times \frac{1}{8}$ | $1\frac{1}{2} \times \frac{1}{8}$ | $1 \times \frac{1}{8}$ | $1\frac{1}{2} \times \frac{1}{8}$ | $2 \times \frac{3}{16}$ | |
| $\frac{3}{4} \times \frac{3}{16}$ | $1\frac{1}{2} \times \frac{3}{16}$ | $1 \times \frac{3}{16}$ | $1\frac{1}{2} \times \frac{3}{16}$ | $2 \times \frac{1}{4}$ | |
| | | $1 \times \frac{1}{4}$ | $1\frac{1}{2} \times \frac{1}{4}$ | $2" \text{ I Bar}$ | |
| $1 \times \frac{1}{8}$ | $1\frac{3}{4} \times \frac{3}{16}$ | $1" \text{ I Bar}$ | $1\frac{1}{2}" \text{ I Bar}$ | $2\frac{1}{4} \times \frac{3}{16}$ | |
| $1 \times \frac{3}{16}$ | | | | $2\frac{1}{4} \times \frac{1}{4}$ | |
| | $2 \times \frac{3}{16}$ | $1\frac{1}{4} \times \frac{1}{8}$ | $1\frac{3}{4} \times \frac{3}{16}$ | $2\frac{1}{4}" \text{ I Bar}$ | |
| $1\frac{1}{4} \times \frac{1}{8}$ | | $1\frac{1}{4} \times \frac{3}{16}$ | $1\frac{3}{4} \times \frac{1}{4}$ | | |
| $1\frac{1}{4} \times \frac{3}{16}$ | $2\frac{1}{4} \times \frac{3}{16}$ | $1\frac{1}{4} \times \frac{1}{4}$ | $1\frac{3}{4}" \text{ I Bar}$ | $2\frac{1}{2} \times \frac{3}{16}$ | |
| | | $1\frac{1}{4}" \text{ I Bar}$ | | $2\frac{1}{2} \times \frac{1}{4}$ | |
| | $2\frac{1}{2} \times \frac{3}{16}$ | | | $2\frac{1}{2}" \text{ I Bar}$ | |

5 MATERIAL

Grating material is designated by name, such as "steel," "stainless steel" or "aluminum".



**WELDED OR
PRESSURE-LOCKED GRATING**



RIVETED GRATING

*Equivalent bearing bar sizes in millimeters are obtained by a multiplication factor of 25.4

**EXAMPLES OF
USE OF STANDARD
MARKING SYSTEM**

| MARK | DESCRIPTION OF GRATING DESIGNATED | |
|---|---|--|
| W-19-4 (1 x 3/16) STEEL | W 19 4 (1 x 3/16) STEEL | welded bearing bars spaced 1 3/16 in. (30 mm) on center cross bars spaced 4 in. (102 mm) on center bearing bar size, 1 in. x 3/16 in. (25.4 mm x 4.8 mm) material |
| R-18-7 (1 1/4 x 1/8) STAINLESS STEEL | R 18 7 (1 1/4 x 1/8) STAINLESS STEEL | riveted bearing bars spaced 1 1/8 in. (29 mm) between faces rivets spaced 7 in. (178 mm) on center bearing bar size, 1 1/4 in. x 1/8 in. (31.8 mm x 3.2 mm) material |
| P-15-2 (1 1/4 x 3/16) ALUMINUM | P 15 2 (1 1/4 x 3/16) ALUMINUM | pressure-locked bearing bars spaced 15/16 in. (24 mm) on center cross bars spaced 2 in. (51 mm) on center bearing bar size, 1 1/4 in. x 3/16 in. (31.8 mm x 4.8 mm) material |
| P-19-4 (1 1/2 I Bar) ALUMINUM | P 19 4 (1 1/2 in. I Bar) ALUMINUM | pressure-locked bearing bars spaced 1 3/16 in. (30 mm) on center cross bars spaced 4 in. (102 mm) on center bearing bar size, 1 1/2 in. I Bar (38.1 mm I Bar) material |

Manufacturers are equipped to produce gratings having bearing bars and cross bars of other sizes and spacings than shown in this Manual, as well as gratings of other metals, such as bronze, brass, monel, magnesium and special steel alloys. Minimum and maximum sizes and spacings are determined by equipment and/or design factors.

While gratings are normally furnished with a finish as indicated in Section V of the Standard Specifications Section, a wide variety of non-standard finishes can be applied to address specific job and/or function requirements.

Individual manufacturers should be consulted regarding all non-standard products and/or finishes.

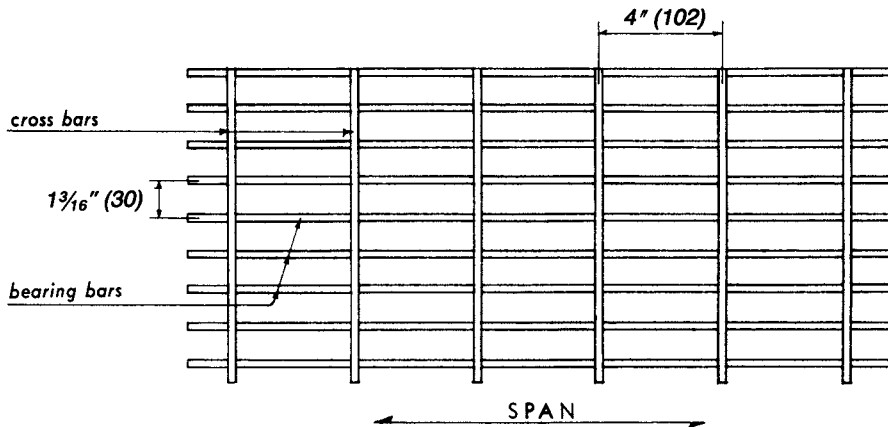


**STANDARD
GRATINGS**

See GLOSSARY OF TERMS for definitions of
Welded, Pressure-locked, and Riveted Gratings

WELDED
(Steel and Stainless Steel only)

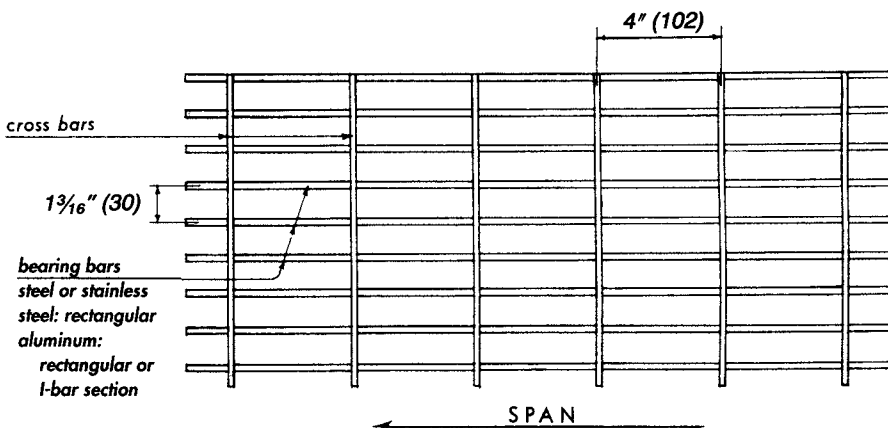
Mark W-19-4



PRESSURE-LOCKED

Mark P-19-4

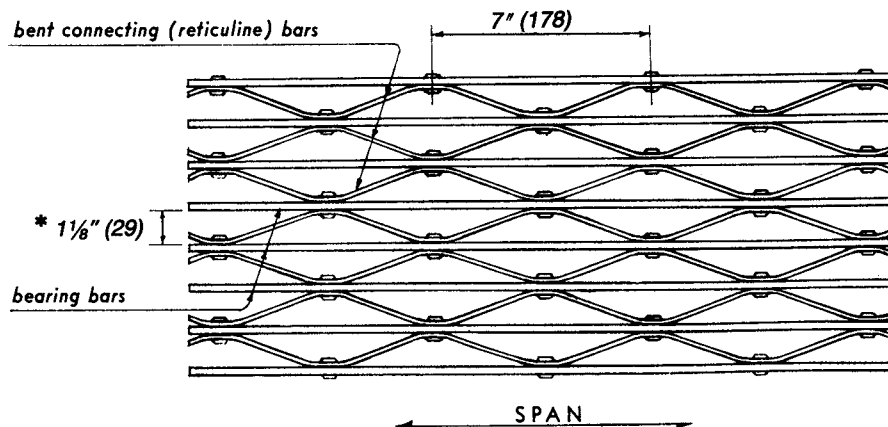
Cross bar ends are peened, bent over, welded, otherwise locked, or allowed to extend, at the manufacturer's discretion.



RIVETED

Mark R-18-7*

Riveted grating are also available with a double crimp in the reticuline bar:



*Note that riveted grating marking indicates space between bearing bars

**MINIMUM STANDARD
SIZES AND TOLERANCES**

MINIMUM STANDARD SIZES

**CROSS BARS and
CONNECTING BARS**

STEEL/STAINLESS STEEL

WELDED

| Bearing Bars | | Minimum Cross Bar Size | |
|--------------|--------------------|-------------------------------------|-------------|
| Thickness | Depth | Section Area | Weight |
| in. (mm) | in. (mm) | in. ² (mm ²) | lb/ft(kg/m) |
| 1/8 (3.2) | thru 1 1/2 (38.1) | .049 (32) | .167 (.248) |
| 3/16 (4.8) | thru 1 1/2 (38.1) | .049 (32) | .167 (.248) |
| 3/16 (4.8) | 1 3/4 (44) or more | .062 (40) | .211 (.314) |

PRESSURE-LOCKED

ALUMINUM

Cross bars are made in a variety of solid and hollow shapes. They can be of any size and configuration which will provide structural stability under the stated design loads.

STEEL/STAINLESS STEEL

PRESSURE-LOCKED

| Bearing Bar Thickness in. (mm) | Cross Bar Size | |
|-----------------------------------|-------------------------------|---|
| | Minimum Thickness in. (mm) | Minimum Net Depth |
| | | 1/4 Bearing Bar Depth or 5/16 in. (7.9 mm), whichever is larger |
| 1/8 (3.2) | 0.109 (2.8) | |
| 3/16 (4.8) | 0.125 (3.2) | |

RIVETED

ALUMINUM

| Bearing Bar Depth in. (mm) | Minimum Size of Connecting (Reticuline) Bars | |
|-----------------------------------|--|-------------------|
| | Thickness in. (mm) | Depth in. (mm) |
| 1 (25.4) | 1/8 (3.2) | 5/8 (15.9) |
| 1 1/4 (32) thru 1 3/4 (44) | 1/8 (3.2) | 3/4 (19) |
| over 1 3/4 (44) | 1/8 (3.2) | 1 (25.4) |

STEEL / STAINLESS STEEL

RIVETED

| Bearing Bar Depth in. (mm) | Minimum Size of Connecting (Reticuline) Bars | |
|-----------------------------------|--|-------------------|
| | Thickness in. (mm) | Depth in. (mm) |
| 3/4 (19) | 1/8 (3.2) | 5/8 (15.9) |
| 1 (25.4) thru 1 3/4 (44) | 1/8 (3.2) | 3/4 (19) |
| over 1 3/4 (44) | 1/8 (3.2) | 1 (25.4) |

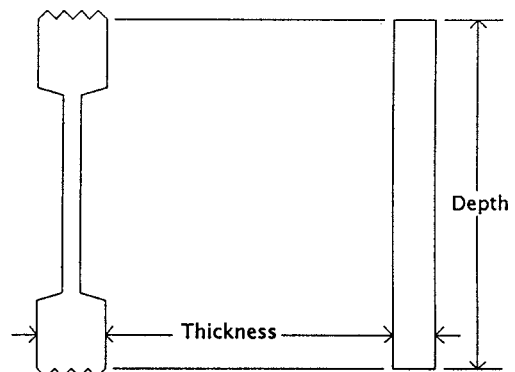
TOLERANCES - Bearing Bars

ALUMINUM

Thickness ±0.007 in. (±0.2 mm) for 1/8" (3.2) and 3/16" (4.8)
 ±0.008 in. (±0.2 mm) for 1/4" (6.4)
 Depth ±0.012 in. (±0.3 mm) for 1" (25.4) and 1 1/4" (31.8) depths
 ±0.014 in. (±0.4 mm) for 1 1/2" (38.1) and 1 3/4" (44.5) depths
 ±0.024 in. (±0.6 mm) for 2" (50.8) thru 2 1/2" (63.5) depths

STEEL/STAINLESS STEEL

Thickness ±0.009 in. (±0.23 mm) for all thicknesses
 Depth ±0.016 in. (±0.4 mm) for 3/4" (19) thru 1 3/4" (44.5) depths
 ±0.024 in. (±0.6 mm) for 2" (50.8) thru 2 1/2" (63.5) depths



NOTE: The following references were used as a guide in establishing the above bearing bar tolerances: ASTM A568; ASTM A749; Aluminum Association standards and data (extruded shapes).

LOAD TABLE
STEEL GRATING

LOAD TABLE FOR STEEL GRATING - TYPE W-19

F=18,000psi, E=29,000,000psi

(For ASTM A 1011/A 1011M SS GR36 Type 1, F=20,000psi and tabular values for U, C, and D shall be multiplied by 1.11)

| Bearing Bar Size (in) | Nominal Weight (psf)** | Recommended max. span (in.) for 1/4 in. deflection under uniform load of 100psf | Span in Inches | | | | | | | | | | | | | | |
|-----------------------|------------------------|---|----------------|-------|-------|-------|-------|-------|-------|-------|-------|-------|-------|-------|-------|-------|-------|
| | | | Span in Inches | | | | | | | | | | | | | | |
| | | | 24 | 30 | 36 | 42 | 48 | 54 | | | | | | | | | |
| 3/4x1/8 [4] | 42 | U | 355 | 227 | 158 | 116 | 89 | 70 | | | | | | | | | |
| | | Du | 0.099 | 0.155 | 0.223 | 0.304 | 0.397 | 0.503 | | | | | | | | | |
| | | C | 355 | 284 | 237 | 203 | 178 | 158 | | | | | | | | | |
| | | Dc | 0.079 | 0.124 | 0.179 | 0.243 | 0.318 | 0.402 | | | | | | | | | |
| 3/4x3/16 [6] | 46 | U | 533 | 341 | 237 | 174 | 133 | 105 | | | | | | | | | |
| | | Du | 0.099 | 0.155 | 0.223 | 0.304 | 0.397 | 0.503 | | | | | | | | | |
| | | C | 533 | 426 | 355 | 305 | 266 | 237 | | | | | | | | | |
| | | Dc | 0.079 | 0.124 | 0.179 | 0.243 | 0.318 | 0.402 | | | | | | | | | |
| 1x1/8 [6] | 51 | U | 632 | 404 | 281 | 206 | 158 | 125 | 101 | 84 | 70 | | | | | | |
| | | Du | 0.074 | 0.116 | 0.168 | 0.228 | 0.298 | 0.377 | 0.466 | 0.563 | 0.670 | | | | | | |
| | | C | 632 | 505 | 421 | 361 | 316 | 281 | 253 | 230 | 211 | | | | | | |
| | | Dc | 0.060 | 0.093 | 0.134 | 0.182 | 0.238 | 0.302 | 0.372 | 0.451 | 0.536 | | | | | | |
| 1x3/16 [8] | 57 | U | 947 | 606 | 421 | 309 | 237 | 187 | 152 | 125 | 105 | | | | | | |
| | | Du | 0.074 | 0.116 | 0.168 | 0.228 | 0.298 | 0.377 | 0.466 | 0.563 | 0.670 | | | | | | |
| | | C | 947 | 758 | 632 | 541 | 474 | 421 | 379 | 344 | 316 | | | | | | |
| | | Dc | 0.060 | 0.093 | 0.134 | 0.182 | 0.238 | 0.302 | 0.372 | 0.451 | 0.536 | 78 | 84 | | | | |
| 1-1/4x1/8 [7] | 61 | U | 987 | 632 | 439 | 322 | 247 | 195 | 158 | 130 | 110 | 93 | 81 | | | | |
| | | Du | 0.060 | 0.093 | 0.134 | 0.182 | 0.238 | 0.302 | 0.372 | 0.451 | 0.536 | 0.629 | 0.730 | | | | |
| | | C | 987 | 789 | 658 | 564 | 493 | 439 | 395 | 359 | 329 | 304 | 282 | | | | |
| | | Dc | 0.048 | 0.074 | 0.107 | 0.146 | 0.191 | 0.241 | 0.298 | 0.360 | 0.429 | 0.504 | 0.584 | 90 | 96 | 102 | 108 |
| 1-1/4x3/16 [9] | 67 | U | 1480 | 947 | 658 | 483 | 370 | 292 | 237 | 196 | 164 | 140 | 121 | | | | |
| | | Du | 0.060 | 0.093 | 0.134 | 0.182 | 0.238 | 0.302 | 0.372 | 0.451 | 0.536 | 0.629 | 0.730 | | | | |
| | | C | 1480 | 1184 | 987 | 846 | 740 | 658 | 592 | 538 | 493 | 455 | 423 | | | | |
| | | Dc | 0.048 | 0.074 | 0.107 | 0.146 | 0.191 | 0.241 | 0.298 | 0.360 | 0.429 | 0.504 | 0.584 | 90 | 96 | 102 | 108 |
| 1-1/2x1/8 [8] | 70 | U | 1421 | 909 | 632 | 464 | 355 | 281 | 227 | 188 | 158 | 135 | 116 | 101 | 89 | 79 | 70 |
| | | Du | 0.050 | 0.078 | 0.112 | 0.152 | 0.199 | 0.251 | 0.310 | 0.376 | 0.447 | 0.524 | 0.608 | 0.698 | 0.794 | 0.897 | 1.006 |
| | | C | 1421 | 1137 | 947 | 812 | 711 | 632 | 568 | 517 | 474 | 437 | 406 | 379 | 355 | 334 | 316 |
| | | Dc | 0.040 | 0.062 | 0.089 | 0.122 | 0.159 | 0.201 | 0.248 | 0.300 | 0.358 | 0.420 | 0.487 | 0.559 | 0.636 | 0.718 | 0.804 |
| 1-1/2x3/16 [11] | 77 | U | 2132 | 1364 | 947 | 696 | 533 | 421 | 341 | 282 | 237 | 202 | 174 | 152 | 133 | 118 | 105 |
| | | Du | 0.050 | 0.078 | 0.112 | 0.152 | 0.199 | 0.251 | 0.310 | 0.376 | 0.447 | 0.524 | 0.608 | 0.698 | 0.794 | 0.897 | 1.006 |
| | | C | 2132 | 1705 | 1421 | 1218 | 1066 | 947 | 853 | 775 | 711 | 656 | 609 | 568 | 533 | 502 | 474 |
| | | Dc | 0.040 | 0.062 | 0.089 | 0.122 | 0.159 | 0.201 | 0.248 | 0.300 | 0.358 | 0.420 | 0.487 | 0.559 | 0.636 | 0.718 | 0.804 |
| 1-3/4x3/16 [13] | 87 | U | 2901 | 1857 | 1289 | 947 | 725 | 573 | 464 | 384 | 322 | 275 | 237 | 206 | 181 | 161 | 143 |
| | | Du | 0.043 | 0.067 | 0.096 | 0.130 | 0.170 | 0.215 | 0.266 | 0.322 | 0.383 | 0.450 | 0.521 | 0.599 | 0.681 | 0.769 | 0.862 |
| | | C | 2901 | 2321 | 1934 | 1658 | 1451 | 1289 | 1161 | 1055 | 967 | 893 | 829 | 774 | 725 | 683 | 645 |
| | | Dc | 0.034 | 0.053 | 0.077 | 0.104 | 0.136 | 0.172 | 0.213 | 0.257 | 0.306 | 0.360 | 0.417 | 0.479 | 0.545 | 0.615 | 0.689 |
| 2x3/16 [14] | 96 | U | 3789 | 2425 | 1684 | 1237 | 947 | 749 | 606 | 501 | 421 | 359 | 309 | 269 | 237 | 210 | 187 |
| | | Du | 0.037 | 0.058 | 0.084 | 0.114 | 0.149 | 0.189 | 0.233 | 0.282 | 0.335 | 0.393 | 0.456 | 0.524 | 0.596 | 0.673 | 0.754 |
| | | C | 3789 | 3032 | 2526 | 2165 | 1895 | 1684 | 1516 | 1378 | 1263 | 1166 | 1083 | 1011 | 947 | 892 | 842 |
| | | Dc | 0.030 | 0.047 | 0.067 | 0.091 | 0.119 | 0.151 | 0.186 | 0.225 | 0.268 | 0.315 | 0.365 | 0.419 | 0.477 | 0.538 | 0.603 |
| 2-1/4x3/16 [16] | 105 | U | 4796 | 3069 | 2132 | 1566 | 1199 | 947 | 767 | 634 | 533 | 454 | 392 | 341 | 300 | 266 | 237 |
| | | Du | 0.033 | 0.052 | 0.074 | 0.101 | 0.132 | 0.168 | 0.207 | 0.250 | 0.298 | 0.350 | 0.406 | 0.466 | 0.530 | 0.598 | 0.670 |
| | | C | 4796 | 3837 | 3197 | 2741 | 2398 | 2132 | 1918 | 1744 | 1599 | 1476 | 1370 | 1279 | 1199 | 1128 | 1066 |
| | | Dc | 0.026 | 0.041 | 0.060 | 0.081 | 0.106 | 0.134 | 0.166 | 0.200 | 0.238 | 0.280 | 0.324 | 0.372 | 0.424 | 0.478 | 0.536 |
| 2-1/2x3/16 [18] | 113 | U | 5921 | 3789 | 2632 | 1933 | 1480 | 1170 | 947 | 783 | 658 | 561 | 483 | 421 | 370 | 328 | 292 |
| | | Du | 0.030 | 0.047 | 0.067 | 0.091 | 0.119 | 0.151 | 0.186 | 0.225 | 0.268 | 0.315 | 0.365 | 0.419 | 0.477 | 0.538 | 0.603 |
| | | C | 5921 | 4737 | 3947 | 3383 | 2961 | 2632 | 2368 | 2153 | 1974 | 1822 | 1692 | 1579 | 1480 | 1393 | 1316 |
| | | Dc | 0.024 | 0.037 | 0.054 | 0.073 | 0.095 | 0.121 | 0.149 | 0.180 | 0.215 | 0.252 | 0.292 | 0.335 | 0.381 | 0.431 | 0.483 |

All loads and deflections shown are based on engineering computations using gross sections and nominal sizes of bearing bars. The values listed are for design selection only and are not intended to be "absolute" since actual load capacity will be affected slightly by variations which can be expected due to material and manufacturing tolerances.

Note: The carrying capacity of a piece of grating subjected to a concentrated load over only a portion of its width is determined by the stiffness of both the bearing bars and the cross bars, and therefore differs with the type of grating used. To determine the carrying capacity of gratings subject to such loadings, the manufacturer's engineering department should be consulted.

Conversion Factors:

For gratings with other than 1-3/16" bearing bar spacing, or for different design stresses, proportionate conversion factors apply. Refer to the Metal Bar Grating Engineering Design Manual for the development of such factors.

Note: 1/4" is considered the maximum deflection consistent with pedestrian comfort, but can be exceeded for other loading conditions at the discretion of the engineer.

NOTE: For serrated grating, the depth of grating required for a specified load is 1/4" greater than in the table.

**Weights (mass/area) shown are approximate and vary with manufacturers. They are provided for preliminary design computations only and are not intended for any other purpose.

LOAD TABLE FOR STEEL GRATING - TYPE W-19

F=124.11MPa, E=200,000MPa

(For ASTM A 1011/A 1011M SS GR250 Type 1, F=137.9MPa, and tabular values for U, C, and D shall be multiplied by 1.11)

Recommended max. span for 6.35mm deflection under uniform load of 4.788kPa

U=uniform load, kPa
D=deflection, mm.
C=concentrated load at mid-span, kN per metre of grating width

All loads and deflections shown are based on engineering computations using gross sections and nominal sizes of bearing bars. The values listed are for design selection only and are not intended to be "absolute" since actual load capacity will be affected slightly by variations which can be expected due to material and manufacturing tolerances.

Note: The carrying capacity of a piece of grating subjected to a concentrated load over only a portion of its width is determined by the stiffness of both the bearing bars and the cross bars, and therefore differs with the type of grating used. To determine the carrying capacity of gratings subject to such loadings, the manufacturer's engineering department should be consulted.

Conversion Factors:
For gratings with other than 30mm bearing bar spacing, or for different design stresses, proportionate conversion factors apply. Refer to the Metal Bar Grating Engineering Design Manual for the development of such factors.

Note: 6.35mm is considered the maximum deflection consistent with pedestrian comfort, but can be exceeded for other loading conditions at the discretion of the engineer.

| Bearing Bar Size (mm) | Nominal Weight (kg/m ²)** | | | Span in Millimeters | | | | | | | | | | | | | | |
|-----------------------|---------------------------------------|----|--------|---------------------|--------|-------|-------|-------|-------|-------|-------|-------|-------|-------|-------|-------|-------|------|
| | | | | 610 | 762 | 914 | 1067 | 1219 | 1372 | 1524 | 1676 | 1829 | 1981 | 2134 | 2286 | 2438 | 2591 | 2743 |
| 19x3 [20] | 1054 | U | 17.01 | 10.89 | 7.56 | 5.55 | 4.25 | 3.36 | | | | | | | | | | |
| | | Du | 2.52 | 3.94 | 5.68 | 7.73 | 10.09 | 12.77 | | | | | | | | | | |
| | | C | 5.18 | 4.15 | 3.46 | 2.96 | 2.59 | 2.30 | | | | | | | | | | |
| | | Dc | 2.02 | 3.15 | 4.54 | 6.18 | 8.07 | 10.22 | | | | | | | | | | |
| 19x5 [28] | 1167 | U | 25.52 | 16.33 | 11.34 | 8.33 | 6.38 | 5.04 | | | | | | | | | | |
| | | Du | 2.52 | 3.94 | 5.68 | 7.73 | 10.09 | 12.77 | | | | | | | | | | |
| | | C | 7.78 | 6.22 | 5.18 | 4.44 | 3.89 | 3.46 | | | | | | | | | | |
| | | Dc | 2.02 | 3.15 | 4.54 | 6.18 | 8.07 | 10.22 | | | | | | | | | | |
| 25x3 [25] | 1308 | U | 30.24 | 19.35 | 13.44 | 9.87 | 7.56 | 5.97 | 4.84 | 4.00 | 3.36 | | | | | | | |
| | | Du | 1.89 | 2.96 | 4.26 | 5.79 | 7.57 | 9.58 | 11.82 | 14.31 | 17.03 | | | | | | | |
| | | C | 9.22 | 7.37 | 6.14 | 5.27 | 4.61 | 4.10 | 3.69 | 3.35 | 3.07 | | | | | | | |
| | | Dc | 1.51 | 2.36 | 3.41 | 4.64 | 6.05 | 7.66 | 9.46 | 11.45 | 13.62 | | | | | | | |
| 25x5 [36] | 1448 | U | 45.36 | 29.03 | 20.16 | 14.81 | 11.34 | 8.96 | 7.26 | 6.00 | 5.04 | | | | | | | |
| | | Du | 1.89 | 2.96 | 4.26 | 5.79 | 7.57 | 9.58 | 11.82 | 14.31 | 17.03 | | | | | | | |
| | | C | 13.83 | 11.06 | 9.22 | 7.90 | 6.91 | 6.14 | 5.53 | 5.03 | 4.61 | | | | | | | |
| | | Dc | 1.51 | 2.36 | 3.41 | 4.64 | 6.05 | 7.66 | 9.46 | 11.45 | 13.62 | | | | | | | |
| 32x3 [30] | 1546 | U | 47.25 | 30.24 | 21.00 | 15.43 | 11.81 | 9.33 | 7.56 | 6.25 | 5.25 | 4.47 | 3.86 | | | | | |
| | | Du | 1.51 | 2.36 | 3.41 | 4.64 | 6.05 | 7.66 | 9.46 | 11.45 | 13.62 | 15.99 | 18.54 | | | | | |
| | | C | 14.40 | 11.52 | 9.60 | 8.23 | 7.20 | 6.40 | 5.76 | 5.24 | 4.80 | 4.43 | 4.11 | | | | | |
| | | Dc | 1.21 | 1.89 | 2.72 | 3.71 | 4.84 | 6.13 | 7.57 | 9.16 | 10.90 | 12.79 | 14.83 | | | | | |
| 32x5 [44] | 1711 | U | 70.88 | 45.36 | 31.50 | 23.14 | 17.72 | 14.00 | 11.34 | 9.37 | 7.88 | 6.71 | 5.79 | | | | | |
| | | Du | 1.51 | 2.36 | 3.41 | 4.64 | 6.05 | 7.66 | 9.46 | 11.45 | 13.62 | 15.99 | 18.54 | | | | | |
| | | C | 21.60 | 17.28 | 14.40 | 12.34 | 10.80 | 9.60 | 8.64 | 7.86 | 7.20 | 6.65 | 6.17 | | | | | |
| | | Dc | 1.21 | 1.89 | 2.72 | 3.71 | 4.84 | 6.13 | 7.57 | 9.16 | 10.90 | 12.79 | 14.83 | | | | | |
| 38x3 [36] | 1773 | U | 68.04 | 43.55 | 30.24 | 22.22 | 17.01 | 13.44 | 10.89 | 9.00 | 7.56 | 6.44 | 5.55 | 4.84 | 4.25 | 3.77 | 3.36 | |
| | | Du | 1.26 | 1.97 | 2.84 | 3.86 | 5.04 | 6.39 | 7.88 | 9.54 | 11.35 | 13.32 | 15.45 | 17.74 | 20.18 | 22.78 | 25.54 | |
| | | C | 20.74 | 16.59 | 13.83 | 11.85 | 10.37 | 9.22 | 8.30 | 7.54 | 6.91 | 6.38 | 5.93 | 5.53 | 5.18 | 4.88 | 4.61 | |
| | | Dc | 1.01 | 1.58 | 2.27 | 3.09 | 4.04 | 5.11 | 6.31 | 7.63 | 9.08 | 10.66 | 12.36 | 14.19 | 16.14 | 18.22 | 20.43 | |
| 38x5 [52] | 1962 | U | 102.06 | 65.32 | 45.36 | 33.33 | 25.52 | 20.16 | 16.33 | 13.50 | 11.34 | 9.66 | 8.33 | 7.26 | 6.38 | 5.65 | 5.04 | |
| | | Du | 1.26 | 1.97 | 2.84 | 3.86 | 5.04 | 6.39 | 7.88 | 9.54 | 11.35 | 13.32 | 15.45 | 17.74 | 20.18 | 22.78 | 25.54 | |
| | | C | 31.11 | 24.89 | 20.74 | 17.78 | 15.55 | 13.83 | 12.44 | 11.31 | 10.37 | 9.57 | 8.89 | 8.30 | 7.78 | 7.32 | 6.91 | |
| | | Dc | 1.01 | 1.58 | 2.27 | 3.09 | 4.04 | 5.11 | 6.31 | 7.63 | 9.08 | 10.66 | 12.36 | 14.19 | 16.14 | 18.22 | 20.43 | |
| 44x5 [60] | 2203 | U | 138.92 | 88.91 | 61.74 | 45.36 | 34.73 | 27.44 | 22.23 | 18.37 | 15.44 | 13.15 | 11.34 | 9.88 | 8.68 | 7.69 | 6.86 | |
| | | Du | 1.08 | 1.69 | 2.43 | 3.31 | 4.32 | 5.47 | 6.76 | 8.18 | 9.73 | 11.42 | 13.24 | 15.20 | 17.30 | 19.53 | 21.89 | |
| | | C | 42.34 | 33.87 | 28.23 | 24.20 | 21.17 | 18.82 | 16.94 | 15.40 | 14.11 | 13.03 | 12.10 | 11.29 | 10.59 | 9.96 | 9.41 | |
| | | Dc | 0.86 | 1.35 | 1.95 | 2.65 | 3.46 | 4.38 | 5.41 | 6.54 | 7.78 | 9.13 | 10.59 | 12.16 | 13.84 | 15.62 | 17.51 | |
| 51x5 [68] | 2435 | U | 181.44 | 116.12 | 80.64 | 59.25 | 45.36 | 35.84 | 29.03 | 23.99 | 20.16 | 17.18 | 14.81 | 12.90 | 11.34 | 10.05 | 8.96 | |
| | | Du | 0.95 | 1.48 | 2.13 | 2.90 | 3.78 | 4.79 | 5.91 | 7.15 | 8.51 | 9.99 | 11.59 | 13.30 | 15.13 | 17.09 | 19.16 | |
| | | C | 55.30 | 44.24 | 36.87 | 31.60 | 27.65 | 24.58 | 22.12 | 20.11 | 18.43 | 17.02 | 15.80 | 14.75 | 13.83 | 13.01 | 12.29 | |
| | | Dc | 0.76 | 1.18 | 1.70 | 2.32 | 3.03 | 3.83 | 4.73 | 5.72 | 6.81 | 7.99 | 9.27 | 10.64 | 12.11 | 13.67 | 15.32 | |
| 57x5 [76] | 2659 | U | 229.64 | 146.97 | 102.06 | 74.98 | 57.41 | 45.36 | 36.74 | 30.37 | 25.52 | 21.74 | 18.75 | 16.33 | 14.35 | 12.71 | 11.34 | |
| | | Du | 0.84 | 1.31 | 1.89 | 2.58 | 3.36 | 4.26 | 5.26 | 6.36 | 7.57 | 8.88 | 10.30 | 11.82 | 13.45 | 15.19 | 17.03 | |
| | | C | 69.99 | 55.99 | 46.66 | 40.00 | 35.00 | 31.11 | 28.00 | 25.45 | 23.33 | 21.54 | 20.00 | 18.66 | 17.50 | 16.47 | 15.55 | |
| | | Dc | 0.67 | 1.05 | 1.51 | 2.06 | 2.69 | 3.41 | 4.20 | 5.09 | 6.05 | 7.10 | 8.24 | 9.46 | 10.76 | 12.15 | 13.62 | |
| 64x5 [84] | 2878 | U | 283.50 | 181.44 | 126.00 | 92.57 | 70.88 | 56.00 | 45.36 | 37.49 | 31.50 | 26.84 | 23.14 | 20.16 | 17.72 | 15.70 | 14.00 | |
| | | Du | 0.76 | 1.18 | 1.70 | 2.32 | 3.03 | 3.83 | 4.73 | 5.72 | 6.81 | 7.99 | 9.27 | 10.64 | 12.11 | 13.67 | 15.32 | |
| | | C | 86.41 | 69.13 | 57.61 | 49.38 | 43.21 | 38.41 | 34.56 | 31.42 | 28.80 | 26.59 | 24.69 | 23.04 | 21.60 | 20.33 | 19.20 | |
| | | Dc | 0.61 | 0.95 | 1.36 | 1.85 | 2.42 | 3.06 | 3.78 | 4.58 | 5.45 | 6.39 | 7.42 | 8.51 | 9.69 | 10.93 | 12.26 | |

NOTE: For serrated grating, the depth of grating required for a specified load is 6mm greater than in the table.

**Weights (mass/area) shown are approximate and vary with manufacturers. They are provided for preliminary design computations only and are not intended for any other purpose.

LOAD TABLE
STAINLESS STEEL GRATING

LOAD TABLE FOR WELDED STAINLESS STEEL GRATING - TYPE W-19
ALLOYS 304 & 316

F=20,000psi, E=28,000,000psi

(For Alloys 304L and 316L, F=16,500psi and tabular values for U, C, and D shall be multiplied by 0.825)

Recommended max. span (in.) for 1/4 in.
deflection under uniform load of 100psf

All loads and deflections shown are based on engineering computations using gross sections and nominal sizes of bearing bars. The values listed are for design selection only and are not intended to be "absolute" since actual load capacity will be affected slightly by variations which can be expected due to material and manufacturing tolerances.

| Bearing Bar Size (in) | Nominal Weight (psf)** | | | | Span in Inches | | | | | | | | | |
|-----------------------|------------------------|----|-------|-------|----------------|-------|-------|-------|-------|-------|-------|-------|-------|--|
| | | | | | 24 | 30 | 36 | 42 | 48 | 54 | 60 | 66 | 72 | |
| 3/4x1/8 [4] | 41 | U | 395 | 253 | 175 | 129 | 99 | 78 | | | | | | |
| | | Du | 0.114 | 0.179 | 0.257 | 0.350 | 0.457 | 0.579 | | | | | | |
| | | C | 395 | 316 | 263 | 226 | 197 | 175 | | | | | | |
| | | Dc | 0.091 | 0.143 | 0.206 | 0.280 | 0.366 | 0.463 | | | | | | |
| 3/4x3/16 [6] | 46 | U | 592 | 379 | 263 | 193 | 148 | 117 | | | | | | |
| | | Du | 0.114 | 0.179 | 0.257 | 0.350 | 0.457 | 0.579 | | | | | | |
| | | C | 592 | 474 | 395 | 338 | 296 | 263 | | | | | | |
| | | Dc | 0.091 | 0.143 | 0.206 | 0.280 | 0.366 | 0.463 | | | | | | |
| 1x1/8 [6] | 51 | U | 702 | 449 | 312 | 229 | 175 | 139 | 112 | 93 | 78 | | | |
| | | Du | 0.086 | 0.134 | 0.193 | 0.263 | 0.343 | 0.434 | 0.536 | 0.648 | 0.771 | | | |
| | | C | 702 | 561 | 468 | 401 | 351 | 312 | 281 | 255 | 234 | | | |
| | | Dc | 0.069 | 0.107 | 0.154 | 0.210 | 0.274 | 0.347 | 0.429 | 0.519 | 0.617 | | | |
| 1x3/16 [8] | 56 | U | 1053 | 674 | 468 | 344 | 263 | 208 | 168 | 139 | 117 | | | |
| | | Du | 0.086 | 0.134 | 0.193 | 0.263 | 0.343 | 0.434 | 0.536 | 0.648 | 0.771 | | | |
| | | C | 1053 | 842 | 702 | 602 | 526 | 468 | 421 | 383 | 351 | | | |
| | | Dc | 0.069 | 0.107 | 0.154 | 0.210 | 0.274 | 0.347 | 0.429 | 0.519 | 0.617 | | | |
| 1-1/4x1/8 [7] | 60 | U | 1096 | 702 | 487 | 358 | 274 | 217 | 175 | 145 | 122 | 104 | 90 | |
| | | Du | 0.069 | 0.107 | 0.154 | 0.210 | 0.274 | 0.347 | 0.429 | 0.519 | 0.617 | 0.724 | 0.840 | |
| | | C | 1096 | 877 | 731 | 627 | 548 | 487 | 439 | 399 | 365 | 337 | 313 | |
| | | Dc | 0.055 | 0.086 | 0.123 | 0.168 | 0.219 | 0.278 | 0.343 | 0.415 | 0.494 | 0.579 | 0.672 | |
| 1-1/4x3/16 [9] | 67 | U | 1645 | 1053 | 731 | 537 | 411 | 325 | 263 | 217 | 183 | 156 | 134 | |
| | | Du | 0.069 | 0.107 | 0.154 | 0.210 | 0.274 | 0.347 | 0.429 | 0.519 | 0.617 | 0.724 | 0.840 | |
| | | C | 1645 | 1316 | 1096 | 940 | 822 | 731 | 658 | 598 | 548 | 506 | 470 | |
| | | Dc | 0.055 | 0.086 | 0.123 | 0.168 | 0.219 | 0.278 | 0.343 | 0.415 | 0.494 | 0.579 | 0.672 | |
| 1-1/2x1/8 [8] | 69 | U | 1579 | 1011 | 702 | 516 | 395 | 312 | 253 | 209 | 175 | 149 | 129 | |
| | | Du | 0.057 | 0.089 | 0.129 | 0.175 | 0.229 | 0.289 | 0.357 | 0.432 | 0.514 | 0.604 | 0.700 | |
| | | C | 1579 | 1263 | 1053 | 902 | 789 | 702 | 632 | 574 | 526 | 486 | 451 | |
| | | Dc | 0.046 | 0.071 | 0.103 | 0.140 | 0.183 | 0.231 | 0.286 | 0.346 | 0.411 | 0.483 | 0.560 | |
| 1-1/2x3/16 [11] | 77 | U | 2368 | 1516 | 1053 | 773 | 592 | 468 | 379 | 313 | 263 | 224 | 193 | |
| | | Du | 0.057 | 0.089 | 0.129 | 0.175 | 0.229 | 0.289 | 0.357 | 0.432 | 0.514 | 0.604 | 0.700 | |
| | | C | 2368 | 1895 | 1579 | 1353 | 1184 | 1053 | 947 | 861 | 789 | 729 | 677 | |
| | | Dc | 0.046 | 0.071 | 0.103 | 0.140 | 0.183 | 0.231 | 0.286 | 0.346 | 0.411 | 0.483 | 0.560 | |
| 1-3/4x3/16 [13] | 86 | U | 3224 | 2063 | 1433 | 1053 | 806 | 637 | 516 | 426 | 358 | 305 | 263 | |
| | | Du | 0.049 | 0.077 | 0.110 | 0.150 | 0.196 | 0.248 | 0.306 | 0.370 | 0.441 | 0.517 | 0.600 | |
| | | C | 3224 | 2579 | 2149 | 1842 | 1612 | 1433 | 1289 | 1172 | 1075 | 992 | 921 | |
| | | Dc | 0.039 | 0.061 | 0.088 | 0.120 | 0.157 | 0.198 | 0.245 | 0.296 | 0.353 | 0.414 | 0.480 | |
| 2x3/16 [14] | 95 | U | 4211 | 2695 | 1871 | 1375 | 1053 | 832 | 674 | 557 | 468 | 399 | 344 | |
| | | Du | 0.043 | 0.067 | 0.096 | 0.131 | 0.171 | 0.217 | 0.268 | 0.324 | 0.386 | 0.453 | 0.525 | |
| | | C | 4211 | 3368 | 2807 | 2406 | 2105 | 1871 | 1684 | 1531 | 1404 | 1296 | 1203 | |
| | | Dc | 0.034 | 0.054 | 0.077 | 0.105 | 0.137 | 0.174 | 0.214 | 0.259 | 0.309 | 0.362 | 0.420 | |
| 2-1/4x3/16 [16] | 104 | U | 5329 | 3411 | 2368 | 1740 | 1332 | 1053 | 853 | 705 | 592 | 505 | 435 | |
| | | Du | 0.038 | 0.060 | 0.086 | 0.117 | 0.152 | 0.193 | 0.238 | 0.288 | 0.343 | 0.402 | 0.467 | |
| | | C | 5329 | 4263 | 3553 | 3045 | 2664 | 2368 | 2132 | 1938 | 1776 | 1640 | 1523 | |
| | | Dc | 0.030 | 0.048 | 0.069 | 0.093 | 0.122 | 0.154 | 0.190 | 0.230 | 0.274 | 0.322 | 0.373 | |
| 2-1/2x3/16 [18] | 112 | U | 6579 | 4211 | 2924 | 2148 | 1645 | 1300 | 1053 | 870 | 731 | 623 | 537 | |
| | | Du | 0.034 | 0.054 | 0.077 | 0.105 | 0.137 | 0.174 | 0.214 | 0.259 | 0.309 | 0.362 | 0.420 | |
| | | C | 6579 | 5263 | 4386 | 3759 | 3289 | 2924 | 2632 | 2392 | 2193 | 2024 | 1880 | |
| | | Dc | 0.027 | 0.043 | 0.062 | 0.084 | 0.110 | 0.139 | 0.171 | 0.207 | 0.247 | 0.290 | 0.336 | |

Note: The carrying capacity of a piece of grating subjected to a concentrated load over only a portion of its width is determined by the stiffness of both the bearing bars and the cross bars, and therefore differs with the type of grating used. To determine the carrying capacity of gratings subject to such loadings, the manufacturer's engineering department should be consulted.

Conversion Factors:

For gratings with other than 1-3/16" bearing bar spacing, or for different design stresses, proportionate conversion factors apply. Refer to the Metal Bar Grating Engineering Design Manual for the development of such factors.

Note: 1/4" is considered the maximum deflection consistent with pedestrian comfort, but can be exceeded for other loading conditions at the discretion of the engineer.

NOTE: For serrated grating, the depth of grating required for a specified load is 1/4" greater than in the table.

**Weights (mass/area) shown are approximate and vary with manufacturers. They are provided for preliminary design computations only and are not intended for any other purpose.

LOAD TABLE (METRIC)
STAINLESS STEEL GRATING

LOAD TABLE FOR WELDED STAINLESS STEEL GRATING - TYPE W-19
ALLOYS 304 & 316

F=137.90MPa, E=193,000MPa

(Alloys 304L and 316L, F=113.77MPa and tabular values for U, C, and D shall be multiplied by 0.825)

Recommended max. span for 6.35mm
deflection under uniform load of 4.788kPa

All loads and deflections shown are based on engineering computations using gross sections and nominal sizes of bearing bars. The values listed are for design selection only and are not intended to be "absolute" since actual load capacity will be affected slightly by variations which can be expected due to material and manufacturing tolerances.

| Bearing Bar Size (mm) | Nominal Weight (kg/m ²)** | U=uniform load, kPa D=deflection, mm. C=concentrated load at mid-span, kN per metre of grating width | Span in Millimeters | | | | | | | | | | |
|-----------------------|---------------------------------------|--|---------------------|--------|--------|--------|-------|-------|-------|-------|-------|-------|-------|
| | | | 610 | 762 | 914 | 1067 | 1219 | 1372 | | | | | |
| 19x3 [20] | 1045 | U | 18.90 | 12.10 | 8.40 | 6.17 | 4.73 | 3.73 | | | | | |
| | | Du | 2.90 | 4.54 | 6.53 | 8.89 | 11.61 | 14.70 | | | | | |
| | | C | 5.76 | 4.61 | 3.84 | 3.29 | 2.88 | 2.56 | | | | | |
| | | Dc | 2.32 | 3.63 | 5.23 | 7.11 | 9.29 | 11.76 | | | | | |
| 19x5 [28] | 1156 | U | 28.35 | 18.14 | 12.60 | 9.26 | 7.09 | 5.60 | | | | | |
| | | Du | 2.90 | 4.54 | 6.53 | 8.89 | 11.61 | 14.70 | | | | | |
| | | C | 8.64 | 6.91 | 5.76 | 4.94 | 4.32 | 3.84 | | | | | |
| | | Dc | 2.32 | 3.63 | 5.23 | 7.11 | 9.29 | 11.76 | | | | | |
| 25x3 [25] | 1297 | U | 33.60 | 21.50 | 14.93 | 10.97 | 8.40 | 6.64 | 5.38 | 4.44 | 3.73 | | |
| | | Du | 2.18 | 3.40 | 4.90 | 6.67 | 8.71 | 11.02 | 13.61 | 16.46 | 19.59 | | |
| | | C | 10.24 | 8.19 | 6.83 | 5.85 | 5.12 | 4.55 | 4.10 | 3.72 | 3.41 | | |
| | | Dc | 1.74 | 2.72 | 3.92 | 5.33 | 6.97 | 8.82 | 10.89 | 13.17 | 15.68 | | |
| 25x5 [36] | 1435 | U | 50.40 | 32.26 | 22.40 | 16.46 | 12.60 | 9.96 | 8.06 | 6.66 | 5.60 | | |
| | | Du | 2.18 | 3.40 | 4.90 | 6.67 | 8.71 | 11.02 | 13.61 | 16.46 | 19.59 | | |
| | | C | 15.36 | 12.29 | 10.24 | 8.78 | 7.68 | 6.83 | 6.14 | 5.59 | 5.12 | | |
| | | Dc | 1.74 | 2.72 | 3.92 | 5.33 | 6.97 | 8.82 | 10.89 | 13.17 | 15.68 | | |
| 32x3 [30] | 1533 | U | 52.50 | 33.60 | 23.33 | 17.14 | 13.13 | 10.37 | 8.40 | 6.94 | 5.83 | 4.97 | 4.29 |
| | | Du | 1.74 | 2.72 | 3.92 | 5.33 | 6.97 | 8.82 | 10.89 | 13.17 | 15.68 | 18.40 | 21.34 |
| | | C | 16.00 | 12.80 | 10.67 | 9.14 | 8.00 | 7.11 | 6.40 | 5.82 | 5.33 | 4.92 | 4.57 |
| | | Dc | 1.39 | 2.18 | 3.14 | 4.27 | 5.57 | 7.05 | 8.71 | 10.54 | 12.54 | 14.72 | 17.07 |
| 32x5 [44] | 1696 | U | 78.75 | 50.40 | 35.00 | 25.71 | 19.69 | 15.56 | 12.60 | 10.41 | 8.75 | 7.46 | 6.43 |
| | | Du | 1.74 | 2.72 | 3.92 | 5.33 | 6.97 | 8.82 | 10.89 | 13.17 | 15.68 | 18.40 | 21.34 |
| | | C | 24.00 | 19.20 | 16.00 | 13.72 | 12.00 | 10.67 | 9.60 | 8.73 | 8.00 | 7.39 | 6.86 |
| | | Dc | 1.39 | 2.18 | 3.14 | 4.27 | 5.57 | 7.05 | 8.71 | 10.54 | 12.54 | 14.72 | 17.07 |
| 38x3 [36] | 1757 | U | 75.60 | 48.38 | 33.60 | 24.69 | 18.90 | 14.93 | 12.10 | 10.00 | 8.40 | 7.16 | 6.17 |
| | | Du | 1.45 | 2.27 | 3.27 | 4.45 | 5.81 | 7.35 | 9.07 | 10.98 | 13.06 | 15.33 | 17.78 |
| | | C | 23.04 | 18.43 | 15.36 | 13.17 | 11.52 | 10.24 | 9.22 | 8.38 | 7.68 | 7.09 | 6.58 |
| | | Dc | 1.16 | 1.81 | 2.61 | 3.56 | 4.64 | 5.88 | 7.26 | 8.78 | 10.45 | 12.26 | 14.22 |
| 38x5 [52] | 1945 | U | 113.40 | 72.58 | 50.40 | 37.03 | 28.35 | 22.40 | 18.14 | 15.00 | 12.60 | 10.74 | 9.26 |
| | | Du | 1.45 | 2.27 | 3.27 | 4.45 | 5.81 | 7.35 | 9.07 | 10.98 | 13.06 | 15.33 | 17.78 |
| | | C | 34.56 | 27.65 | 23.04 | 19.75 | 17.28 | 15.36 | 13.83 | 12.57 | 11.52 | 10.64 | 9.88 |
| | | Dc | 1.16 | 1.81 | 2.61 | 3.56 | 4.64 | 5.88 | 7.26 | 8.78 | 10.45 | 12.26 | 14.22 |
| 44x5 [60] | 2183 | U | 154.35 | 98.78 | 68.60 | 50.40 | 38.59 | 30.49 | 24.70 | 20.41 | 17.15 | 14.61 | 12.60 |
| | | Du | 1.24 | 1.94 | 2.80 | 3.81 | 4.98 | 6.30 | 7.78 | 9.41 | 11.20 | 13.14 | 15.24 |
| | | C | 47.05 | 37.64 | 31.36 | 26.88 | 23.52 | 20.91 | 18.82 | 17.11 | 15.68 | 14.48 | 13.44 |
| | | Dc | 1.00 | 1.56 | 2.24 | 3.05 | 3.98 | 5.04 | 6.22 | 7.53 | 8.96 | 10.51 | 12.19 |
| 51x5 [68] | 2413 | U | 201.60 | 129.02 | 89.60 | 65.83 | 50.40 | 39.82 | 32.26 | 26.66 | 22.40 | 19.09 | 16.46 |
| | | Du | 1.09 | 1.70 | 2.45 | 3.33 | 4.35 | 5.51 | 6.80 | 8.23 | 9.80 | 11.50 | 13.34 |
| | | C | 61.45 | 49.16 | 40.97 | 35.11 | 30.72 | 27.31 | 24.58 | 22.34 | 20.48 | 18.91 | 17.56 |
| | | Dc | 0.87 | 1.36 | 1.96 | 2.67 | 3.48 | 4.41 | 5.44 | 6.59 | 7.84 | 9.20 | 10.67 |
| 57x5 [76] | 2636 | U | 255.15 | 163.30 | 113.40 | 83.31 | 63.79 | 50.40 | 40.82 | 33.74 | 28.35 | 24.16 | 20.83 |
| | | Du | 0.97 | 1.51 | 2.18 | 2.96 | 3.87 | 4.90 | 6.05 | 7.32 | 8.71 | 10.22 | 11.85 |
| | | C | 77.77 | 62.22 | 51.85 | 44.44 | 38.89 | 34.56 | 31.11 | 28.28 | 25.92 | 23.93 | 22.22 |
| | | Dc | 0.77 | 1.21 | 1.74 | 2.37 | 3.10 | 3.92 | 4.84 | 5.85 | 6.97 | 8.18 | 9.48 |
| 64x5 [84] | 2853 | U | 315.00 | 201.60 | 140.00 | 102.86 | 78.75 | 62.22 | 50.40 | 41.65 | 35.00 | 29.82 | 25.71 |
| | | Du | 1 | 1.36 | 1.96 | 2.67 | 3.48 | 4.41 | 5.44 | 6.59 | 7.84 | 9.20 | 10.67 |
| | | C | 96.01 | 76.81 | 64.01 | 54.86 | 48.01 | 42.67 | 38.41 | 34.91 | 32.00 | 29.54 | 27.43 |
| | | Dc | 0.70 | 1.09 | 1.57 | 2.13 | 2.79 | 3.53 | 4.35 | 5.27 | 6.27 | 7.36 | 8.53 |

Note: The carrying capacity of a piece of grating subjected to a concentrated load over only a portion of its width is determined by the stiffness of both the bearing bars and the cross bars, and therefore differs with the type of grating used. To determine the carrying capacity of gratings subject to such loadings, the manufacturer's engineering department should be consulted.

Conversion Factors:
For gratings with other than 30mm bearing bar spacing, or for different design stresses, proportionate conversion factors apply. Refer to the Metal Bar Grating Engineering Design Manual for the development of such factors.

Note: 6.35mm is considered the maximum deflection consistent with pedestrian comfort, but can be exceeded for other loading conditions at the discretion of the engineer.

NOTE: For serrated grating, the depth of grating required for a specified load is 6mm greater than in the table.

**Weights (mass/area) shown are approximate and vary with manufacturers. They are provided for preliminary design computations only and are not intended for any other purpose.

LOAD TABLE
ALUMINUM GRATING

LOAD TABLE FOR ALUMINUM GRATING - TYPE P-19

ALLOYS 6061-T6 & 6063-T6

F=12,000psi, E=10,000,000psi

Recommended max. span (in.) for 1/4 in.
deflection under uniform load of 100psf

U=uniform load, psf
D=deflection, in.
C=concentrated load at mid-span,
lb per foot of grating width

All loads and deflections shown are based on engineering computations using gross sections and nominal sizes of bearing bars. The values listed are for design selection only and are not intended to be "absolute" since actual load capacity will be affected slightly by variations which can be expected due to material and manufacturing tolerances.

| Bearing Bar Size (in.) | Nominal Weight (psf)** | | | | Span in inches | | | | | | Conversion Factors: | | | | | | | |
|-----------------------------------|------------------------|----|-------|-------|----------------|-------|-------|-------|-------|-------|---|-------|-------|-------|-------|-------|-------|--|
| | | | | | 24 | 30 | 36 | 42 | 48 | 54 | For gratings with other than 1-3/16" bearing bar spacing, or for different design stresses, proportionate conversion factors apply. Refer to the Metal Bar Grating Engineering Design Manual for the development of such factors. | | | | | | | |
| | | | | | | | | | | | 60 | 66 | 72 | 78 | 84 | | | |
| 1x1/8 [2] | 39 | U | 421 | 269 | 187 | 137 | 105 | 83 | | | | | | | | | | |
| | | Du | 0.144 | 0.225 | 0.324 | 0.441 | 0.576 | 0.729 | | | | | | | | | | |
| | | Dc | 0.115 | 0.180 | 0.259 | 0.353 | 0.461 | 0.583 | | | | | | | | | | |
| 1x3/16 or 1" I Bar [3] | 44 | U | 632 | 404 | 281 | 206 | 158 | 125 | | | | | | | | | | |
| | | Du | 0.144 | 0.225 | 0.324 | 0.441 | 0.576 | 0.729 | | | | | | | | | | |
| | | Dc | 0.115 | 0.180 | 0.259 | 0.353 | 0.461 | 0.583 | | | | | | | | | | |
| 1x1/4 [4] | 47 | U | 842 | 539 | 374 | 275 | 211 | 166 | 135 | 111 | 94 | | | | | | | |
| | | Du | 0.144 | 0.225 | 0.324 | 0.441 | 0.576 | 0.729 | 0.900 | 1.089 | 1.296 | | | | | | | |
| | | Dc | 0.115 | 0.180 | 0.259 | 0.353 | 0.461 | 0.583 | 0.720 | 0.871 | 1.037 | | | | | | | |
| 1-1/4x1/8 [3] | 47 | U | 658 | 421 | 292 | 215 | 164 | 130 | 105 | 87 | 73 | | | | | | | |
| | | Du | 0.115 | 0.180 | 0.259 | 0.353 | 0.461 | 0.583 | 0.720 | 0.871 | 1.037 | | | | | | | |
| | | Dc | 0.092 | 0.144 | 0.207 | 0.282 | 0.369 | 0.467 | 0.576 | 0.697 | 0.829 | 0.973 | 1.129 | | | | | |
| 1-1/4x3/16 or 1-1/4" I Bar [4] | 52 | U | 987 | 632 | 439 | 322 | 247 | 195 | 158 | 130 | 110 | 93 | 81 | | | | | |
| | | Du | 0.115 | 0.180 | 0.259 | 0.353 | 0.461 | 0.583 | 0.720 | 0.871 | 1.037 | 1.217 | 1.411 | | | | | |
| | | Dc | 0.092 | 0.144 | 0.207 | 0.282 | 0.369 | 0.467 | 0.576 | 0.697 | 0.829 | 0.973 | 1.129 | | | | | |
| 1-1/4x1/4 [5] | 55 | U | 1316 | 842 | 585 | 430 | 329 | 260 | 211 | 174 | 146 | 125 | 107 | | | | | |
| | | Du | 0.115 | 0.180 | 0.259 | 0.353 | 0.461 | 0.583 | 0.720 | 0.871 | 1.037 | 1.217 | 1.411 | | | | | |
| | | Dc | 0.092 | 0.144 | 0.207 | 0.282 | 0.369 | 0.467 | 0.576 | 0.697 | 0.829 | 0.973 | 1.129 | | | | | |
| 1-1/2x1/8 [3] | 53 | U | 947 | 606 | 421 | 309 | 237 | 187 | 152 | 125 | 105 | 90 | 77 | 67 | 59 | 52 | 47 | |
| | | Du | 0.096 | 0.150 | 0.216 | 0.294 | 0.384 | 0.486 | 0.600 | 0.726 | 0.864 | 1.014 | 1.176 | 1.350 | 1.536 | 1.734 | 1.944 | |
| | | Dc | 0.077 | 0.120 | 0.173 | 0.235 | 0.307 | 0.389 | 0.480 | 0.581 | 0.691 | 0.811 | 0.941 | 1.080 | 1.229 | 1.387 | 1.555 | |
| 1-1/2x3/16 or 1-1/2" I Bar [4] | 59 | U | 1421 | 909 | 632 | 464 | 355 | 281 | 227 | 188 | 158 | 135 | 116 | 101 | 89 | 79 | 70 | |
| | | Du | 0.096 | 0.150 | 0.216 | 0.294 | 0.384 | 0.486 | 0.600 | 0.726 | 0.864 | 1.014 | 1.176 | 1.350 | 1.536 | 1.734 | 1.944 | |
| | | Dc | 0.077 | 0.120 | 0.173 | 0.235 | 0.307 | 0.389 | 0.480 | 0.581 | 0.691 | 0.811 | 0.941 | 1.080 | 1.229 | 1.387 | 1.555 | |
| 1-1/2x1/4 [5] | 64 | U | 1895 | 1213 | 842 | 619 | 474 | 374 | 303 | 251 | 211 | 179 | 155 | 135 | 118 | 105 | 94 | |
| | | Du | 0.096 | 0.150 | 0.216 | 0.294 | 0.384 | 0.486 | 0.600 | 0.726 | 0.864 | 1.014 | 1.176 | 1.350 | 1.536 | 1.734 | 1.944 | |
| | | Dc | 0.077 | 0.120 | 0.173 | 0.235 | 0.307 | 0.389 | 0.480 | 0.581 | 0.691 | 0.811 | 0.941 | 1.080 | 1.229 | 1.387 | 1.555 | |
| 1-3/4x3/16 or 1-3/4" I Bar [5] | 66 | U | 1934 | 1238 | 860 | 632 | 484 | 382 | 309 | 256 | 215 | 183 | 158 | 138 | 121 | 107 | 96 | |
| | | Du | 0.082 | 0.129 | 0.185 | 0.252 | 0.329 | 0.417 | 0.514 | 0.622 | 0.741 | 0.869 | 1.008 | 1.157 | 1.317 | 1.486 | 1.666 | |
| | | Dc | 0.066 | 0.103 | 0.148 | 0.202 | 0.263 | 0.333 | 0.411 | 0.498 | 0.592 | 0.695 | 0.806 | 0.926 | 1.053 | 1.189 | 1.333 | |
| 1-3/4x1/4 [6] | 71 | U | 2579 | 1651 | 1146 | 842 | 645 | 509 | 413 | 341 | 287 | 244 | 211 | 183 | 161 | 143 | 127 | |
| | | Du | 0.082 | 0.129 | 0.185 | 0.252 | 0.329 | 0.417 | 0.514 | 0.622 | 0.741 | 0.869 | 1.008 | 1.157 | 1.317 | 1.486 | 1.666 | |
| | | Dc | 0.066 | 0.103 | 0.148 | 0.202 | 0.263 | 0.333 | 0.411 | 0.498 | 0.592 | 0.695 | 0.806 | 0.926 | 1.053 | 1.189 | 1.333 | |
| 2x3/16 or 2" I Bar [5] | 73 | U | 2526 | 1617 | 1123 | 825 | 632 | 499 | 404 | 334 | 281 | 239 | 206 | 180 | 158 | 140 | 125 | |
| | | Du | 0.072 | 0.113 | 0.162 | 0.221 | 0.288 | 0.365 | 0.450 | 0.545 | 0.648 | 0.761 | 0.882 | 1.013 | 1.152 | 1.301 | 1.458 | |
| | | Dc | 0.058 | 0.090 | 0.130 | 0.176 | 0.230 | 0.292 | 0.360 | 0.436 | 0.518 | 0.608 | 0.706 | 0.810 | 0.922 | 1.040 | 1.166 | |
| 2x1/4 [7] | 79 | U | 3368 | 2156 | 1497 | 1100 | 842 | 665 | 539 | 445 | 374 | 319 | 275 | 240 | 211 | 186 | 166 | |
| | | Du | 0.072 | 0.113 | 0.162 | 0.221 | 0.288 | 0.365 | 0.450 | 0.545 | 0.648 | 0.761 | 0.882 | 1.013 | 1.152 | 1.301 | 1.458 | |
| | | Dc | 0.058 | 0.090 | 0.130 | 0.176 | 0.230 | 0.292 | 0.360 | 0.436 | 0.518 | 0.608 | 0.706 | 0.810 | 0.922 | 1.040 | 1.166 | |
| 2-1/4x3/16 or 2-1/4" I Bar [6] | 80 | U | 3197 | 2046 | 1421 | 1044 | 799 | 632 | 512 | 423 | 355 | 303 | 261 | 227 | 200 | 177 | 158 | |
| | | Du | 0.064 | 0.100 | 0.144 | 0.196 | 0.256 | 0.324 | 0.400 | 0.484 | 0.576 | 0.676 | 0.784 | 0.900 | 1.024 | 1.156 | 1.296 | |
| | | Dc | 0.051 | 0.080 | 0.115 | 0.157 | 0.205 | 0.259 | 0.320 | 0.387 | 0.461 | 0.541 | 0.627 | 0.720 | 0.819 | 0.925 | 1.037 | |
| 2-1/4x1/4 [8] | 86 | U | 4263 | 2728 | 1895 | 1392 | 1066 | 842 | 682 | 564 | 474 | 404 | 348 | 303 | 266 | 236 | 211 | |
| | | Du | 0.064 | 0.100 | 0.144 | 0.196 | 0.256 | 0.324 | 0.400 | 0.484 | 0.576 | 0.676 | 0.784 | 0.900 | 1.024 | 1.156 | 1.296 | |
| | | Dc | 0.051 | 0.080 | 0.115 | 0.157 | 0.205 | 0.259 | 0.320 | 0.387 | 0.461 | 0.541 | 0.627 | 0.720 | 0.819 | 0.925 | 1.037 | |
| 2-1/2x3/16 or 2-1/2" I Bar [7] | 87 | U | 3947 | 2526 | 1754 | 1289 | 987 | 780 | 632 | 522 | 439 | 374 | 322 | 281 | 247 | 219 | 195 | |
| | | Du | 0.058 | 0.090 | 0.130 | 0.176 | 0.230 | 0.292 | 0.360 | 0.436 | 0.518 | 0.608 | 0.706 | 0.810 | 0.922 | 1.040 | 1.166 | |
| | | Dc | 0.046 | 0.072 | 0.104 | 0.141 | 0.184 | 0.233 | 0.288 | 0.348 | 0.415 | 0.487 | 0.564 | 0.648 | 0.737 | 0.832 | 0.933 | |
| 2-1/2x1/4 [9] | 93 | U | 5263 | 3368 | 2339 | 1719 | 1316 | 1040 | 842 | 696 | 585 | 498 | 430 | 374 | 329 | 291 | 260 | |
| | | Du | 0.058 | 0.090 | 0.130 | 0.176 | 0.230 | 0.292 | 0.360 | 0.436 | 0.518 | 0.608 | 0.706 | 0.810 | 0.922 | 1.040 | 1.166 | |
| | | Dc | 0.046 | 0.072 | 0.104 | 0.141 | 0.184 | 0.233 | 0.288 | 0.348 | 0.415 | 0.487 | 0.564 | 0.648 | 0.737 | 0.832 | 0.933 | |

Note: The carrying capacity of a piece of grating subjected to a concentrated load over only a portion of its width is determined by the stiffness of both the bearing bars and the cross bars, and therefore differs with the type of grating used. To determine the carrying capacity of gratings subject to such loadings, the manufacturer's engineering department should be consulted.

Conversion Factors:
For gratings with other than 1-3/16" bearing bar spacing, or for different design stresses, proportionate conversion factors apply. Refer to the Metal Bar Grating Engineering Design Manual for the development of such factors.

Note: 1/4" is considered the maximum deflection consistent with pedestrian comfort, but can be exceeded for other loading conditions at the discretion of the engineer.

NOTE: For serrated grating, the depth of grating required for a specified load is 1/4" greater than in the table.

**Weights (mass/area) shown are approximate and vary with manufacturers. They are provided for preliminary design computations only and are not intended for any other purpose.

LOAD TABLE (METRIC) ALUMINUM GRATING

LOAD TABLE FOR ALUMINUM GRATING - TYPE P-19

ALLOYS 6061-T6 & 6063-T6
F=82.74MPa, E=69,000MPa

Recommended max. span for 6.35mm
deflection under uniform load of 4.788kPa

U=uniform load, kPa
D=deflection, mm.
C=concentrated load at mid-span,
kN per metre of grating width

All loads and deflections shown are based on engineering computations using gross sections and nominal sizes of bearing bars. The values listed are for design selection only and are not intended to be "absolute" since actual load capacity will be affected slightly by variations which can be expected due to material and manufacturing tolerances.

Note: The carrying capacity of a piece of grating subjected to a concentrated load over only a portion of its width is determined by the stiffness of both the bearing bars and the cross bars, and therefore differs with the type of grating used. To determine the carrying capacity of gratings subject to such loadings, the manufacturer's engineering department should be consulted.

| Bearing Bar Size (mm) | Nominal Weight (kg/m ²)* | Span in Millimeters | | | | | | |
|----------------------------|--------------------------------------|---------------------|--------|--------|--------|-------|-------|-------|
| | | | 610 | 762 | 914 | 1067 | 1219 | 1372 |
| 25x3 [10] | 1002 | U | 20.16 | 12.90 | 8.96 | 6.58 | 5.04 | 3.98 |
| | | Du | 3.66 | 5.72 | 8.23 | 11.20 | 14.63 | 18.52 |
| | | C | 6.14 | 4.92 | 4.10 | 3.51 | 3.07 | 2.73 |
| | | Dc | 2.93 | 4.57 | 6.58 | 8.96 | 11.70 | 14.81 |
| 25x5 or 25mm I Bar [13] | 1109 | U | 30.24 | 19.35 | 13.44 | 9.87 | 7.56 | 5.97 |
| | | Du | 3.66 | 5.72 | 8.23 | 11.20 | 14.63 | 18.52 |
| | | C | 9.22 | 7.37 | 6.14 | 5.27 | 4.61 | 4.10 |
| | | Dc | 2.93 | 4.57 | 6.58 | 8.96 | 11.70 | 14.81 |
| 25x6 [17] | 1192 | U | 40.32 | 25.80 | 17.92 | 13.17 | 10.08 | 7.96 |
| | | Du | 3.66 | 5.72 | 8.23 | 11.20 | 14.63 | 18.52 |
| | | C | 12.29 | 9.83 | 8.19 | 7.02 | 6.14 | 5.46 |
| | | Dc | 2.93 | 4.57 | 6.58 | 8.96 | 11.70 | 14.81 |
| 32x3 [12] | 1185 | U | 31.50 | 20.16 | 14.00 | 10.29 | 7.88 | 6.22 |
| | | Du | 2.93 | 4.57 | 6.58 | 8.96 | 11.70 | 14.81 |
| | | C | 9.60 | 7.68 | 6.40 | 5.49 | 4.80 | 4.27 |
| | | Dc | 2.34 | 3.66 | 5.27 | 7.17 | 9.36 | 11.85 |
| 32x5 or 32mm I Bar [16] | 1311 | U | 47.25 | 30.24 | 21.00 | 15.43 | 11.81 | 9.33 |
| | | Du | 2.93 | 4.57 | 6.58 | 8.96 | 11.70 | 14.81 |
| | | C | 14.40 | 11.52 | 9.60 | 8.23 | 7.20 | 6.40 |
| | | Dc | 2.34 | 3.66 | 5.27 | 7.17 | 9.36 | 11.85 |
| 32x6 [20] | 1409 | U | 63.00 | 40.32 | 28.00 | 20.57 | 15.75 | 12.44 |
| | | Du | 2.93 | 4.57 | 6.58 | 8.96 | 11.70 | 14.81 |
| | | C | 19.20 | 15.36 | 12.80 | 10.97 | 9.60 | 8.53 |
| | | Dc | 2.34 | 3.66 | 5.27 | 7.17 | 9.36 | 11.85 |
| 38x3 [14] | 1359 | U | 45.36 | 29.03 | 20.16 | 14.81 | 11.34 | 8.96 |
| | | Du | 2.44 | 3.81 | 5.49 | 7.47 | 9.75 | 12.34 |
| | | C | 13.83 | 11.06 | 9.22 | 7.90 | 6.91 | 6.14 |
| | | Dc | 1.95 | 3.05 | 4.39 | 5.97 | 7.80 | 9.88 |
| 38x5 or 38mm I Bar [19] | 1504 | U | 68.04 | 43.55 | 30.24 | 22.22 | 17.01 | 13.44 |
| | | Du | 2.44 | 3.81 | 5.49 | 7.47 | 9.75 | 12.34 |
| | | C | 20.74 | 16.59 | 13.83 | 11.85 | 10.37 | 9.22 |
| | | Dc | 1.95 | 3.05 | 4.39 | 5.97 | 7.80 | 9.88 |
| 38x6 [24] | 1616 | U | 90.72 | 58.06 | 40.32 | 29.62 | 22.68 | 17.92 |
| | | Du | 2.44 | 3.81 | 5.49 | 7.47 | 9.75 | 12.34 |
| | | C | 27.65 | 22.12 | 18.43 | 15.80 | 13.83 | 12.29 |
| | | Dc | 1.95 | 3.05 | 4.39 | 5.97 | 7.80 | 9.88 |
| 44x5 or 44mm I Bar [22] | 1688 | U | 92.61 | 59.27 | 41.16 | 30.24 | 23.15 | 18.29 |
| | | Du | 2.09 | 3.27 | 4.70 | 6.40 | 8.36 | 10.58 |
| | | C | 28.23 | 22.58 | 18.82 | 16.13 | 14.11 | 12.55 |
| | | Dc | 1.67 | 2.61 | 3.76 | 5.12 | 6.69 | 8.46 |
| 44x6 [28] | 1814 | U | 123.48 | 79.03 | 54.88 | 40.32 | 30.87 | 24.39 |
| | | Du | 2.09 | 3.27 | 4.70 | 6.40 | 8.36 | 10.58 |
| | | C | 37.64 | 30.11 | 25.09 | 21.51 | 18.82 | 16.73 |
| | | Dc | 1.67 | 2.61 | 3.76 | 5.12 | 6.69 | 8.46 |
| 51x5 or 51mm I Bar [25] | 1866 | U | 120.96 | 77.41 | 53.76 | 39.50 | 30.24 | 23.89 |
| | | Du | 1.83 | 2.86 | 4.11 | 5.60 | 7.32 | 9.26 |
| | | C | 36.87 | 29.50 | 24.58 | 21.07 | 18.43 | 16.39 |
| | | Dc | 1.46 | 2.29 | 3.29 | 4.48 | 5.85 | 7.41 |
| 51x6 [32] | 2005 | U | 161.28 | 103.22 | 71.68 | 52.66 | 40.32 | 31.86 |
| | | Du | 1.83 | 2.86 | 4.11 | 5.60 | 7.32 | 9.26 |
| | | C | 49.16 | 39.33 | 32.77 | 28.09 | 24.58 | 21.85 |
| | | Dc | 1.46 | 2.29 | 3.29 | 4.48 | 5.85 | 7.41 |
| 57x5 or 57mm I Bar [28] | 2038 | U | 153.09 | 97.98 | 68.04 | 49.99 | 38.27 | 30.24 |
| | | Du | 1.63 | 2.54 | 3.66 | 4.98 | 6.50 | 8.23 |
| | | C | 46.66 | 37.33 | 31.11 | 26.66 | 23.33 | 20.74 |
| | | Dc | 1.30 | 2.03 | 2.93 | 3.98 | 5.20 | 6.58 |
| 57x6 [36] | 2190 | U | 204.12 | 130.64 | 90.72 | 66.65 | 51.03 | 40.32 |
| | | Du | 1.63 | 2.54 | 3.66 | 4.98 | 6.50 | 8.23 |
| | | C | 62.22 | 49.77 | 41.48 | 35.55 | 31.11 | 27.65 |
| | | Dc | 1.30 | 2.03 | 2.93 | 3.98 | 5.20 | 6.58 |
| 64x5 or 64mm I Bar [31] | 2205 | U | 189.00 | 120.96 | 84.00 | 61.71 | 47.25 | 37.33 |
| | | Du | 1.46 | 2.29 | 3.29 | 4.48 | 5.85 | 7.41 |
| | | C | 57.61 | 46.09 | 38.41 | 32.92 | 28.80 | 25.60 |
| | | Dc | 1.17 | 1.83 | 2.63 | 3.58 | 4.68 | 5.93 |
| 64x6 [40] | 2370 | U | 252.00 | 161.28 | 112.00 | 82.29 | 63.00 | 49.78 |
| | | Du | 1.46 | 2.29 | 3.29 | 4.48 | 5.85 | 7.41 |
| | | C | 76.81 | 61.45 | 51.21 | 43.89 | 38.41 | 34.14 |
| | | Dc | 1.17 | 1.83 | 2.63 | 3.58 | 4.68 | 5.93 |

Conversion Factors:

For gratings with other than 30mm bearing bar spacing, or for different design stresses, proportionate conversion factors apply. Refer to the Metal Bar Grating Engineering Design Manual for the development of such factors.

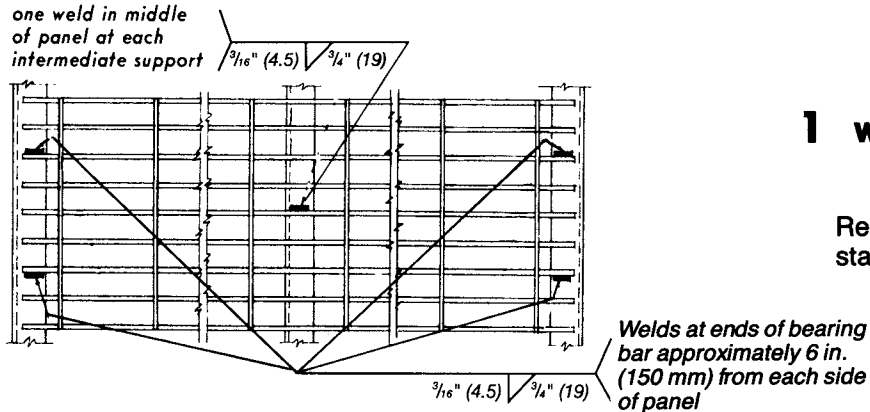
Note: 6.35mm is considered the maximum deflection consistent with pedestrian comfort, but can be exceeded for other loading conditions at the discretion of the engineer.

NOTE: For serrated grating, the depth of grating required for a specified load is 6mm greater than in the table.

**Weights (mass/area) shown are approximate and vary with manufacturers. They are provided for preliminary design computations only and are not intended for any other purpose.

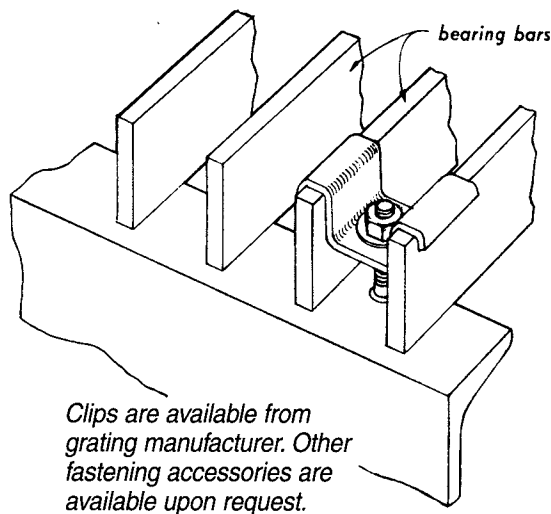
ANCHORING DETAILS

All gratings are to be firmly anchored to their supports by positive means.



1 WELDED ANCHORAGE (in field by others)

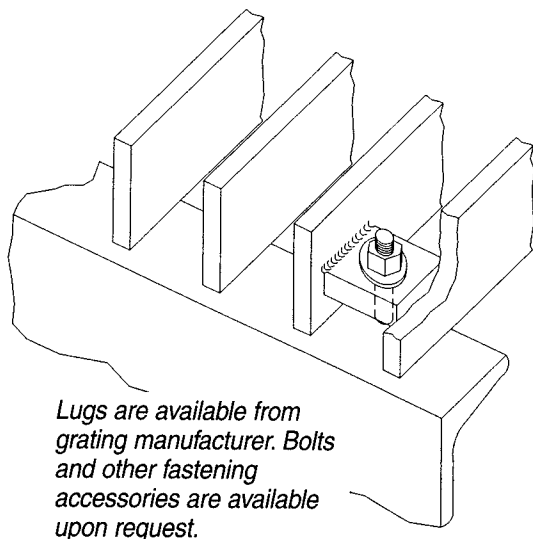
Recommended for all permanently installed gratings.



2 SADDLE CLIPS

Available in steel, stainless steel, and aluminum (it is sometimes necessary to cut cross bars during installation for fastener clearance).

Used for installations where grating is subject to removal. Will be in same location as welds in **1** unless otherwise specified. Fasteners are $\frac{1}{4}$ in. (6.4 mm) diameter.



3 WELD LUGS

shop welded to bearing bars — must be specified when ordering

Used for installations where grating is subject to removal. Will be in same location as welds in **1** unless otherwise specified. Fasteners are $\frac{1}{4}$ in. (6.4 mm) diameter.

4 OTHER TYPES

Other types of anchors which have been appropriately tested and have demonstrated satisfactory performance may be used also. Included in other types are top-mounting mechanical friction anchors which can be installed without requiring access to the underside of the grating and which eliminate field welding and/or drilling. These anchors are removable and may be used where gratings are subject to frequent removal.

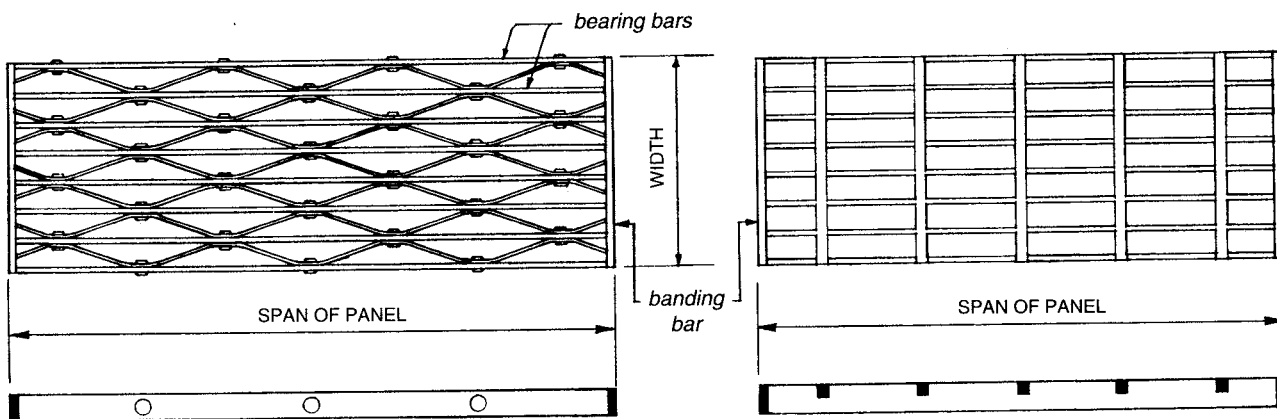
GENERAL REQUIREMENTS FOR GRATING INSTALLATION

Gratings shall be installed with cross bars on top.

Bearing bars shall be notched at supports only when the system has been designed for such modification and is specified by the design engineer and/or indicated on the plans.

Metal shall be used for all grating supports.

* 1 in. (25.4 mm) minimum bearing surface shall be provided for bearing bar depths up to 2 1/4 in. (57.2 mm), and 2 in. (50.8 mm) minimum bearing surface shall be provided for depths of 2 1/2 in. (63.5 mm) and over, at each end of span.

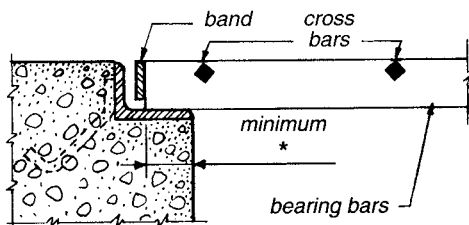


SPAN of panel is measured parallel to the bearing bars.

WIDTH of panel is measured perpendicular to the bearing bars, even if this dimension exceeds the panel span.

SUPPORT and BANDING of TRENCH GRATING

Each end of a metal bar grating panel installed in a trench shall be supported on an angle or other shape whose inside vertical dimension equals that of the bearing bar.

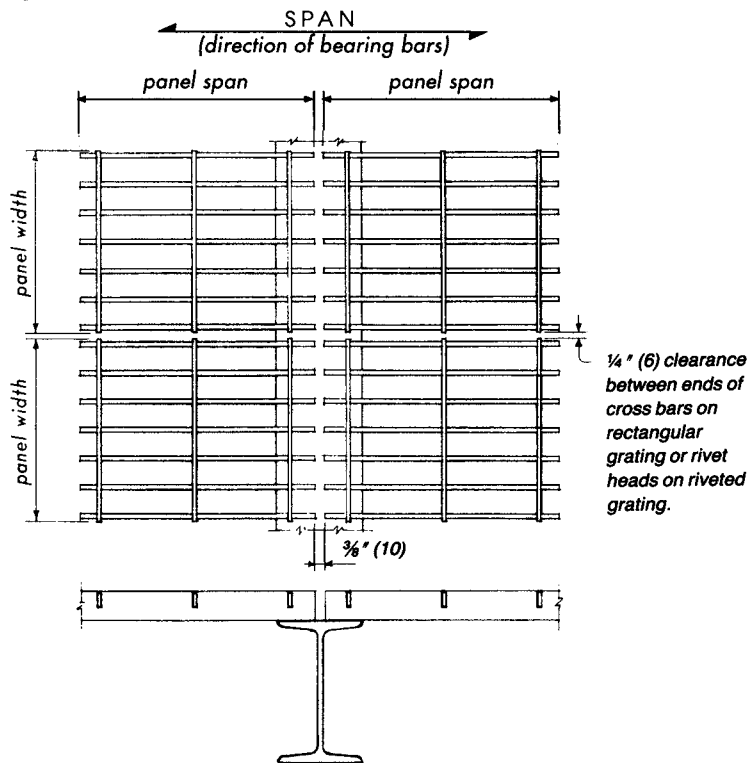


Specify banding on all gratings subject to rolling loads. Full depth band is supplied by manufacturer for all banded grating unless owner or specifier states clearly that shallow banding shall be provided.

For trench grating, banding bar shall be 1/4 in. (6.4 mm) to 1/2 in. (12.7 mm) less than depth of grating to permit drainage.



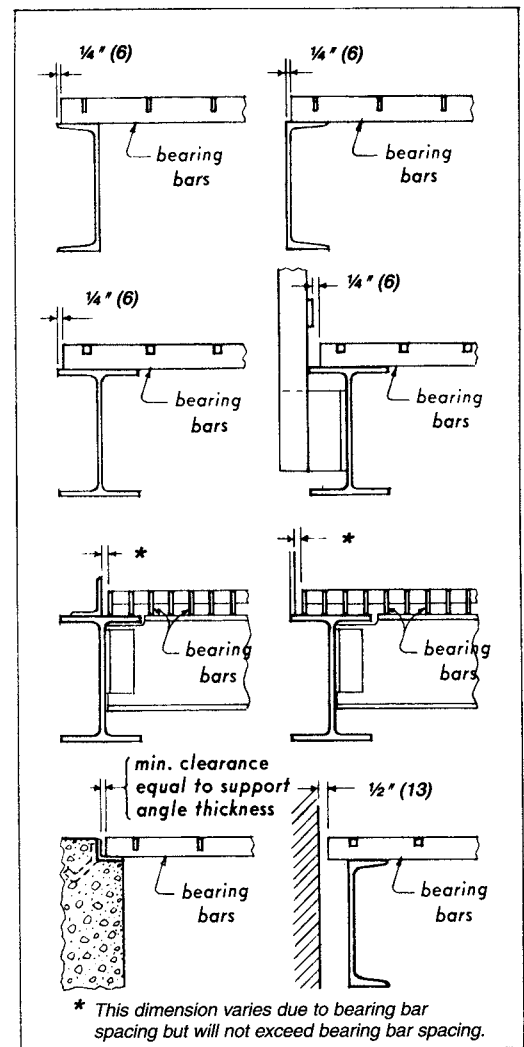
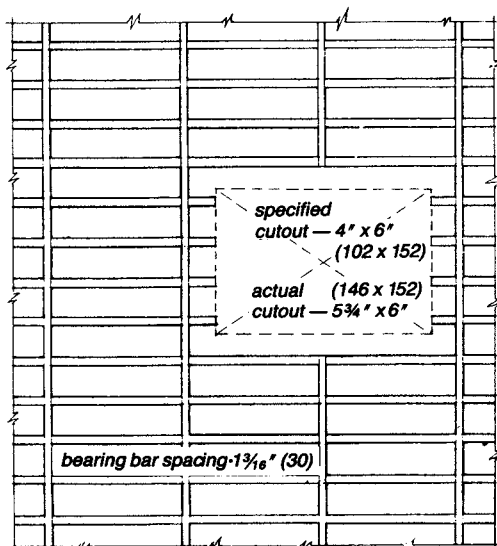
STANDARD INSTALLATION CLEARANCES



Clearances shown are recommended, but vary in accordance with dimensional tolerances shown on page 19.

Cutouts for circular obstructions are recommended to be at least 2 in. (51 mm) larger in diameter than the obstruction. It is further recommended that cutouts for all piping 4 in. (102 mm) or less in diameter be made in the field.

As shown in the drawing below, all rectangular cutouts are made to the next bearing bar beyond the penetration with a clearance not to exceed bearing bar spacing.



**STANDARD
TREAD NOSINGS**

GENERAL NOTES: Nosings shall be used on treads and on grating at the head of stairs, both for visual safety and to sustain edge loads.

Nosing widths shall be between 1 ¼ in. (32 mm) and 1 ½ in. (38 mm).
(Manufacturers' standards are within these limits.)



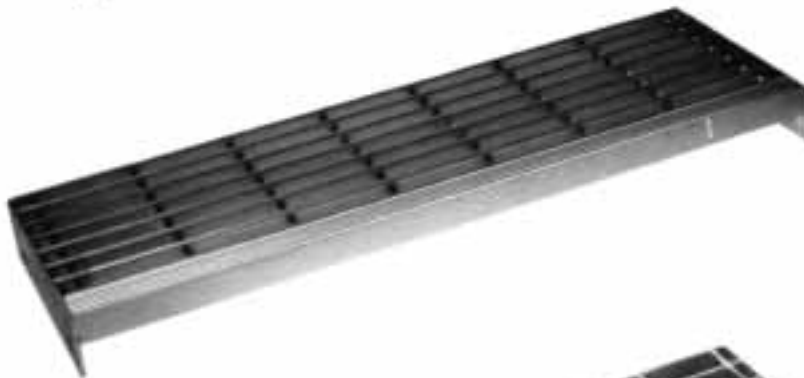
ROLLED FLOOR PLATE NOSING

available in carbon steel
and stainless steel



DIMPLE NOSING

available in carbon steel,
stainless steel, aluminum,
and hot-dip zinc-coated



CORRUGATED NOSING

available in aluminum only

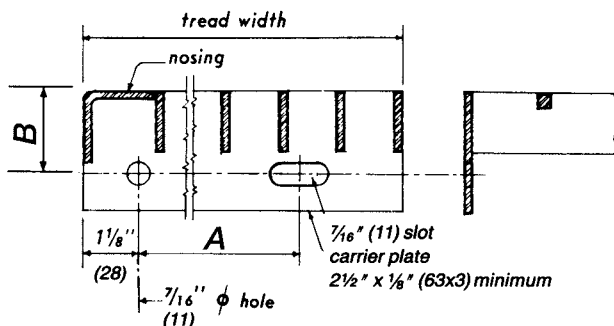


ABRASIVE NOSING

available in carbon steel,
stainless steel, aluminum,
mechanically fastened cast iron,
cast aluminum or furnished
with manufacturer's standard finish
unless specified otherwise by buyer
(Cast iron may show rust when
exposed to the elements.)

TREAD DIMENSIONS

RECOMMENDED DETAILS



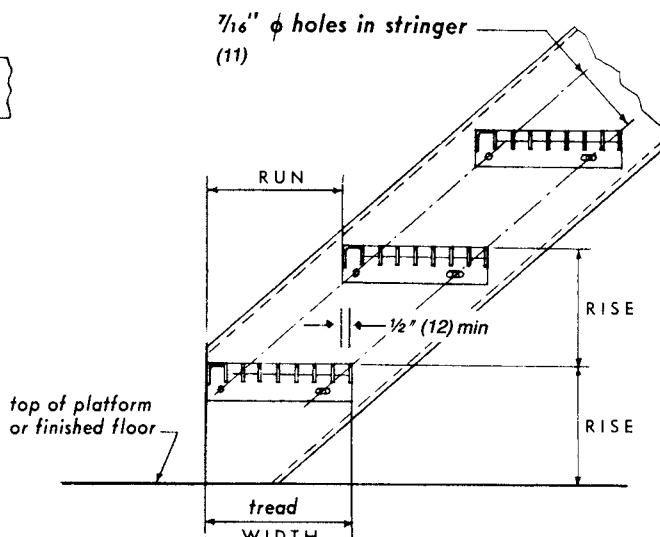
TREAD with carrier plate detail

TREAD with carrier angles available,
consult grating manufacturer for details

DIMENSION A in TREAD with carrier plate detail
in. (mm)

| Nominal Tread Width (approximate)** Bearing Bar Centers | | Dimension A |
|---|--------------|----------------|
| 1 3/16 (30) | 1 5/16 (24) | |
| 6 1/4 (159) | 6 (152) | 2 1/2 (63) |
| 7 1/4 (184) | 7 (178) | 4 1/2 (114) |
| 8 1/2 (216) | 9 (229) | 4 1/2 (114) |
| 9 3/4 (248) | 10 (254) | 7 (178) |
| 11 (279) | 10 3/4 (273) | 7 (178) |
| 12 (305) | 11 3/4 (298) | 7 (178) |

**Consult manufacturer for
exact dimension.



NOTE: Tread width should always be greater than tread run
by 1/2 in. (12mm) minimum.

DIMENSION B in TREAD with carrier plate detail
in. (mm)

| Grating Depth | Dimension B |
|--|--------------------------|
| 3/4 (19) to 1 1/4 (32) 1 1/2 (38) and up | 1 3/4 (44) 2 1/4 (57) |
| aluminum is usually 2 1/4 (57) regardless of depth | |

RECOMMENDED BEARING BAR SIZES

STEEL TREADS

| Bearing Bar Size in. (mm) | Maximum Tread Length* | | | |
|------------------------------|-----------------------|-----------------|--------------------|-----------------|
| | @ 1 3/16 (30) o.c. | | @ 1 5/16 (24) o.c. | |
| | Plain | Serrated | Plain | Serrated |
| 3/4 x 3/16 (19 x 5) | 2' - 4" (.71m) | — | 2' - 8" (.81m) | — |
| 1 x 3/16 (25 x 5) | 3' - 5" (1.04m) | 2' - 10" (.86m) | 4' - 0" (1.22m) | 3' - 4" (1.02m) |
| 1 1/4 x 3/16 (32 x 5) | 4' - 8" (1.42m) | 4' - 2" (1.27m) | 5' - 1" (1.55m) | 4' - 6" (1.37m) |
| 1 1/2 x 3/16 (38 x 5) | 5' - 6" (1.67m) | 5' - 3" (1.60m) | 5' - 6" (1.67m) | 5' - 6" (1.67m) |

Note: When tread length exceeds 5' - 6" (1.67m), design tread for 300 lb (1.33kN)
concentrated loads at one-third points.

*Maximum tread length based on
300 lb (133 kN) concentrated
load on front 5 in. (127 mm) of
tread at center of tread length and
deflection limitation of 1/240 of
length. For maximum length
under other loadings, consult
the manufacturer.

ALUMINUM TREADS

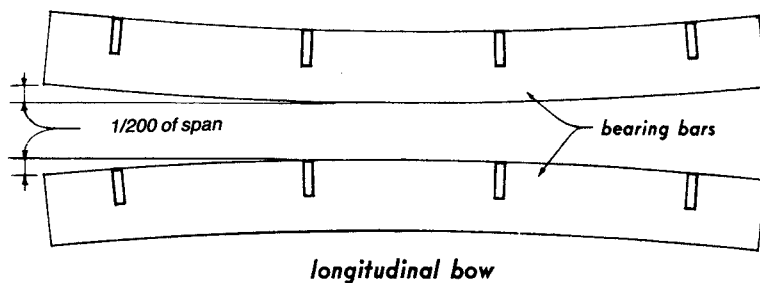
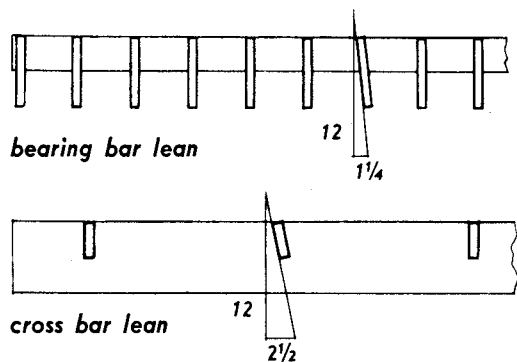
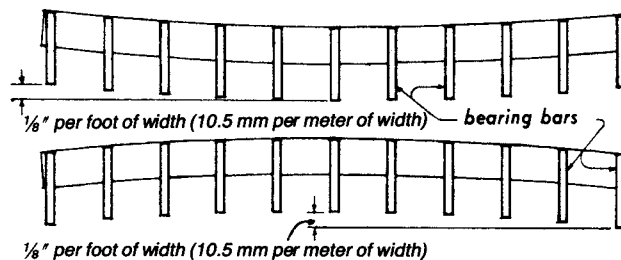
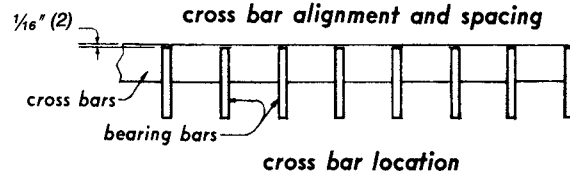
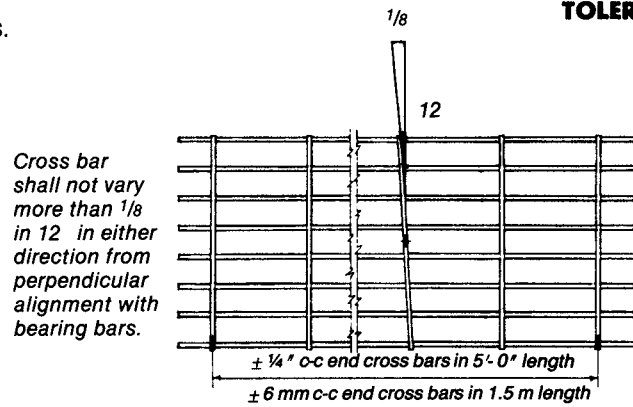
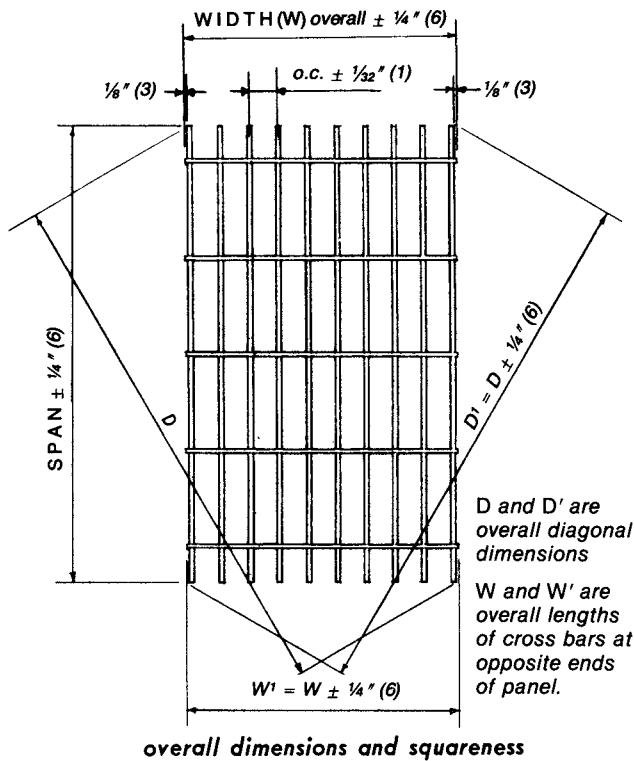
Rectangular Bars

| Bearing Bar Size in. (mm) | Maximum Tread Length* | | | |
|------------------------------|-----------------------|------------------|--------------------|-----------------|
| | @ 1 3/16 (30) o.c. | | @ 1 5/16 (24) o.c. | |
| | Plain | Serrated | Plain | Serrated |
| 1 x 3/16 (25 x 5) | 2' - 4" (.71m) | — | 2' - 6" (.76m) | — |
| 1 1/4 x 3/16 (32 x 5) | 2' - 10" (.86m) | 2' - 7" (.79m) | 3' - 1" (.94m) | 2' - 9" (.84m) |
| 1 1/2 x 3/16 (38 x 5) | 3' - 6" (1.07m) | 3' - 2" (.97m) | 3' - 10" (1.17m) | 3' - 6" (1.07m) |
| 1 3/4 x 3/16 (44 x 5) | 4' - 3" (1.30m) | 3' - 10" (1.17m) | 4' - 8" (1.42m) | 4' - 3" (1.30m) |

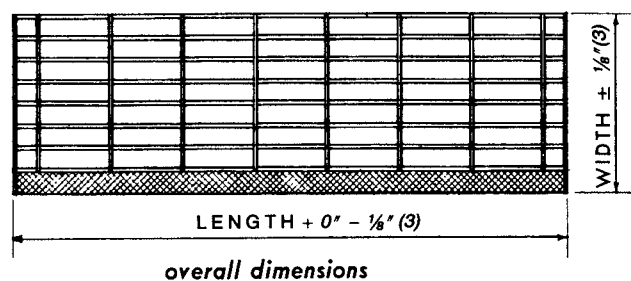
I Bars

| Bearing Bar Size in. (mm) | Maximum Tread Length* | |
|------------------------------|-----------------------|--------------------|
| | @ 1 3/16 (30) o.c. | @ 1 5/16 (24) o.c. |
| 1 (25) I | 2' - 4" (.71m) | 2' - 6" (.76m) |
| 1 1/4 (32) I | 2' - 10" (.86m) | 3' - 1" (.94m) |
| 1 1/2 (38) I | 3' - 6" (1.07m) | 3' - 10" (1.17m) |
| 1 3/4 (44) I | 4' - 3" (1.30m) | 4' - 8" (1.42m) |

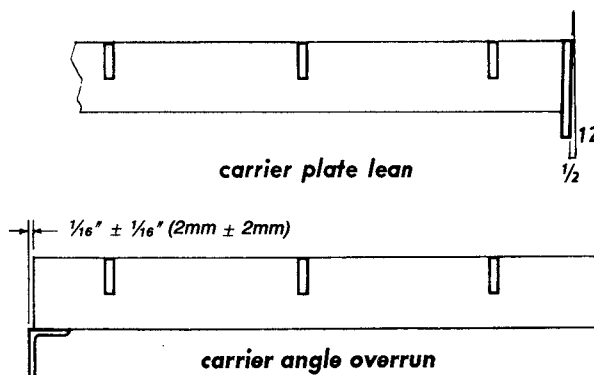
All dimensions given are maximum permissible tolerances.



STAIR TREAD TOLERANCES



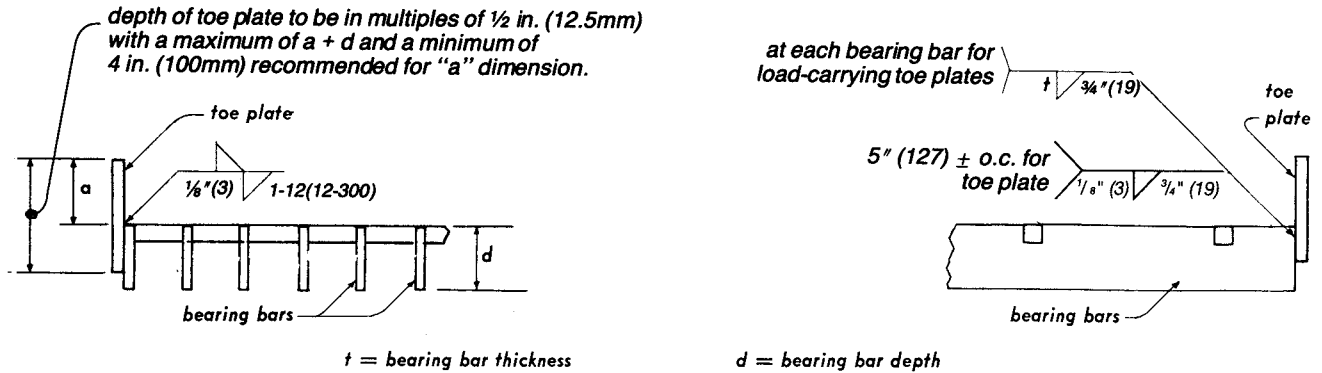
NOTE: Length of tread is distance between outer faces of carrier plates or back to back of carrier angles.



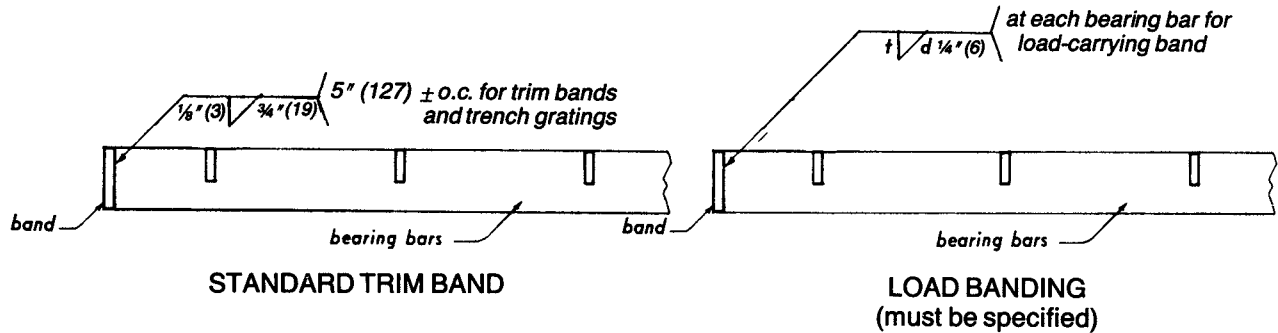
WELDING STANDARDS

The welding standards shown here apply to those gratings and treads having a clear opening of not less than $\frac{5}{8}$ in. (16 mm) between bearing bars and those galvanized as per Specifications, page 23. See NAAMM STANDARD MBG 533 "Welding Specifications for Fabrication of Steel, Aluminum and Stainless Steel Bar Grating" for welding specifications and certification of welders.

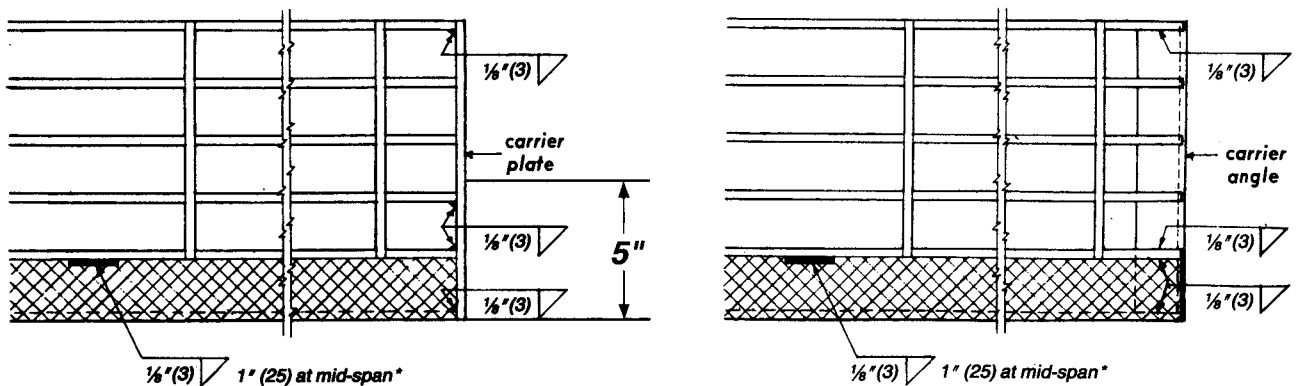
TOE PLATES



BANDING



STAIR TREADS



When carrier plates are used, the bearing bars in the front five inches plus the nosing shall be welded to the carrier plate as shown.

On treads over 9-3/4 in. (248) wide, weld end of center bar also.

*Treads spanning 4 ft. (1.2 m) or more shall have two welds, located at the third points.

USES FOR GRATINGS

| | | |
|---------------------------|--------------------------|-----------------------|
| Airplane Landing Mats | Foot Scrapers | Security Screens |
| Airplane Unloading Ramps | Freight Car Flooring | Snow Fences |
| Airport Light Guards | Freight Car Top Walkways | Solar Screens |
| Areaways | Ladder Treads | Stage Flooring |
| Boat Landing Ramps | Machine and Motor Bases | Stairs |
| Bridge Centerline Markers | Machinery Safety Guards | Stiles |
| Bridge Flooring | Material Screens | Strainers |
| Bridge Sidewalks | Mezzanine Floors | Temporary Wing Walls |
| Catwalks | Mooring Docks | Tote Trays and Boxes |
| Concrete Armoring | Ornamental Grills | Trap Doors |
| Concrete Reinforcement | Overhead Sign Platforms | Tree and Pole Guards |
| Cracking Plant Trays | Paint Booths | Trench Covers |
| Crating | Parapet Screens | Truck Beds |
| Crow's Nests | Partitions | Truck Radiator Grills |
| Deflecting Fenders | Platforms | Vault Covers |
| Dipping Trays | Racks and Shelving | Ventilated Bin Floors |
| Drainage Pit Covers | Railway Crossings | Ventilating Screens |
| Fencing | Ramps | Vestibule Grates |
| Fire Escapes | Refrigerator Car Trays | Walkways |
| Floor Boards | Running Boards | Wash Racks |
| Flooring | Scaffolding | Window Guards |



**ORDERING
INFORMATION**

INFORMATION TO BE PROVIDED

when specifying or purchasing **METAL BAR GRATING**:

Description of grating (see standard marking system, page 4 of this Manual)

A drawing, showing: area to be covered (including all cutouts)
span (direction of bearing bars)
method of support
all critical dimensions
(indicate whether clearances are
taken into account)

Type of anchorage: (see page 14 of this Manual)

Finish: Steel gratings — mill finish, manufacturer's standard paint,
or galvanized as specified

Aluminum gratings — mill as fabricated

Stainless steel gratings — mill as fabricated

Shipping instructions

INFORMATION TO BE PROVIDED

when specifying or purchasing **METAL BAR GRATING TREADS**:

Description of grating (see standard marking system, page 4 of this Manual)

Type of nosing: (see page 17 of this Manual)

Dimensions: width and length of tread

Number of treads

Finish: Steel treads — mill finish, manufacturer's standard paint,
or galvanized as specified

Aluminum treads — mill as fabricated

Stainless steel treads — mill as fabricated

Shipping instructions

STANDARD SPECIFICATIONS

for Metal Bar Gratings and Treads
A Mediumscope Section under Division 5, Uniform System

I. SCOPE

These specifications apply to metal bar grating and/or metal bar grating treads as hereinafter defined and described.

II. DEFINITIONS

a) Metal bar grating is an open grid of metal bars. The bearing bars, which have a cross-sectional depth much greater than width, are held at regular spacing, usually parallel, either by:

1. Straight, sinuous or corrugated cross bars having their longitudinal axes perpendicular to the bearing bars and being connected to them by welding, forging or mechanical locking, or by
2. Bent connecting bars alternately contacting adjacent bearing bars and riveted to them at regular intervals.

b) A metal bar grating tread is a stair tread consisting of a panel of metal bar grating having a metal nosing section extending along one of its long edges and a carrier angle or plate at each end for connection to a stringer.

c) Definitions of other terms shall conform to those given in the Glossary of Terms in the Metal Bar Grating Manual.

III. MATERIALS**a) Steel gratings:**

Steel used in bearing bars, cross bars and connecting bars of rectangular section shall conform to ASTM A 1011/A 1011M Commercial Steel (Type 2) for hot rolled carbon steel sheet and strip. Cross bars made of wire rod shall conform to ASTM A 510 (A 510M) for carbon steel wire rods and coarse round wire, except that permissible tolerance on diameter of coarse round wire shall be ± 0.005 in. (± 0.13 mm). Combinations of these steels are permitted to be welded together.

Rivets shall be of steel, 1/4 in. (6 mm) minimum diameter, flat head type.

b) Aluminum gratings:

Bearing bars shall be either alloy 6061-T6 or alloy 6063-T6, conforming to ASTM B 221 (B 221M). Cross bars and bent connecting bars shall be of alloy 6061 or 6063 conforming to ASTM B 221 (B 221M) or alloy 3003 conforming to ASTM B 210 (B 210M).

Rivets shall be made of aluminum wire of alloy 6053-T61 conforming to ASTM B 316/B 316M.

c) Stainless steel gratings:

Bearing bars, cross bars, and connecting bars shall be Type 304, 304L, 316, or 316L alloy conforming to ASTM A 666.

Rivets shall be of a Type 300 series alloy as prescribed in ASTM A 493.

IV. MINIMUM SIZE OF MEMBERS

a) Size of bearing bars shall conform to the tolerances shown in the Minimum Standard Section, page 7, of the Metal Bar Grating Manual.

b) Minimum dimensions of cross bars shall be as shown on page 7 of the Metal Bar Grating Manual.

c) Banding bars shall have the following minimum thicknesses:

with rectangular bearing bars, the thickness of the bearing bars to which they are attached:

with I-bar section bearing bars, 1/8 in. (3mm).

V. FABRICATION

Basic fabrication of welded, riveted and pressure-locked grating shall be as defined in the Glossary of Terms.

a) All tolerances shall be within the limits shown on page 19 of the Metal Bar Grating Manual.

b) Bandings, nosings, carriers and toe plates, when specified, shall be attached by welding as shown on page 20 of the Metal Bar Grating Manual.

c) All cutouts where more than one bearing bar is cut and bearing bars are not supported shall be load banded.

d) Unless specifically ordered otherwise, no welds anywhere on the grating will be ground.

e) Finishes: Steel gratings, unless specified to be unpainted, shall have all surfaces except those to be galvanized, painted with one coat of manufacturer's standard paint, applied in accord with the manufacturer's standard practice. One shop coat of manufacturer's standard paint is designed to protect the grating and/or treads from the elements during transit. Gratings and/or treads stored at the jobsite shall be covered or under roof. Required covering is not the responsibility of the grating and/or tread supplier. Gratings specified to be galvanized shall have their exposed surfaces zinc-coated by the hot dip process after fabrication, with a coating of not less than 1.8 oz/ft² (550 g/m²) of coated surface.

Unless otherwise specified, abrasive nosings will have the manufacturer's standard finish.

Aluminum gratings shall have a mill (as fabricated) finish.

VI. ANCHORS

Grating anchors shall be supplied by the manufacturer only when specified.

CODE OF STANDARD PRACTICE

The following Code represents generally accepted standard practice in the metal bar grating industry. In order to avoid misunderstanding, these practices will apply only to manufacturers individually adopting them, and then, only to the extent each manufacturer has not made unilateral modifications. Each manufacturer is free to modify the Code generally or as it specifically agrees with any Buyer.

1. GENERAL

1.1 Scope and Application

The rules and practices contained in this Code are recommended by the NAAMM Metal Bar Grating Division as standard for the industry. Unless specifically stated otherwise, they shall be considered applicable to, and a part of, all contracts relating to the purchase and supply of metal bar gratings and/or treads.

No provisions herein contained, however, shall be construed as denying the right of any company to fix its own prices and terms of sale, or restricting any Buyer or Seller from voiding, by mutual agreement, any part of this Code.

1.2 Definitions

As used in this Code, the term "product" or "products" refers to metal bar gratings or metal bar grating treads, and their accessories; the term "Buyer" to the party, or authorized representative of the party, who contracts to purchase such products, and the term "Seller" to the manufacturer who contracts to supply them.

1.3 Designs and Materials

Unless otherwise specified, all designs and materials shall be in accord with the Standard Specifications for Metal Bar Gratings and Treads as published in the NAAMM Metal Bar Grating Manual, latest edition, and the NAAMM Metal Bar Grating Engineering Design Manual, latest edition.

2. QUOTATIONS

2.1 Bidding Plans

Plans intended to serve as the basis for bidding shall provide complete information as to the description of the product, the limits of areas to be covered, the direction of span of grating panels, all supporting members, all cutouts to be provided in the grating area, anchors if required, and finishes desired.

2.2 Basis of Unit Price Quotations

Quotations shall preferably be on the basis of unit price per square foot of grating and per tread. The quoted grating price shall be for grating furnished in rectangular sections.

2.3 Extras:

The following are examples of items not included in unit price quotations, and shall be considered as extras in quotations:

| | |
|---------------------------------------|--|
| Cutting | Degreasing or sandblasting |
| Banding | Special bundling or strapping other than steel strapping |
| Toe plates | Field measurements |
| Support plates or angles | Installation |
| Hinges | Any materials, practices or finishes not called for in the Standard Specifications for Metal Bar Gratings and Treads, in- cluding special welding if galvanized in accord with ASTM A 385. |
| Locking devices | |
| Forming, undercutting or notching | |
| Special drilling, punching or tapping | |
| Anchors | |
| Bolts for stair treads | |

Research of structural steel detail drawings to determine the cutout dimensions for vertical bracing and moment connections when such details are not furnished prior to start of preparation of grating drawings.

3. DRAWINGS AND SPECIFICATIONS

3.1 Construction Drawings and Specifications

The Buyer shall be expected to furnish to the Seller a set of construction drawings and specifications of current issue showing the layout of supports and floor openings correctly dimensioned, together with the sizes and types of grating and treads desired. Should cutouts for vertical bracing or moment connections be required for shop fabrication, the structural steel detail drawings shall be furnished prior to the preparation of the grating drawings.

If construction drawings and specifications are not available, the Buyer shall provide complete information regarding all items listed in "Information to be Provided" as shown on page 22 of the NAAMM Metal Bar Grating Manual.

3.2 Limit of Seller's Responsibility

In the absence of written notice to the contrary, the Buyer's construction plans and specifications will be assumed by the Seller to be correct in all details, and the Seller's responsibility shall be limited to furnishing the products in accord with these documents.

3.3 Approval Drawings

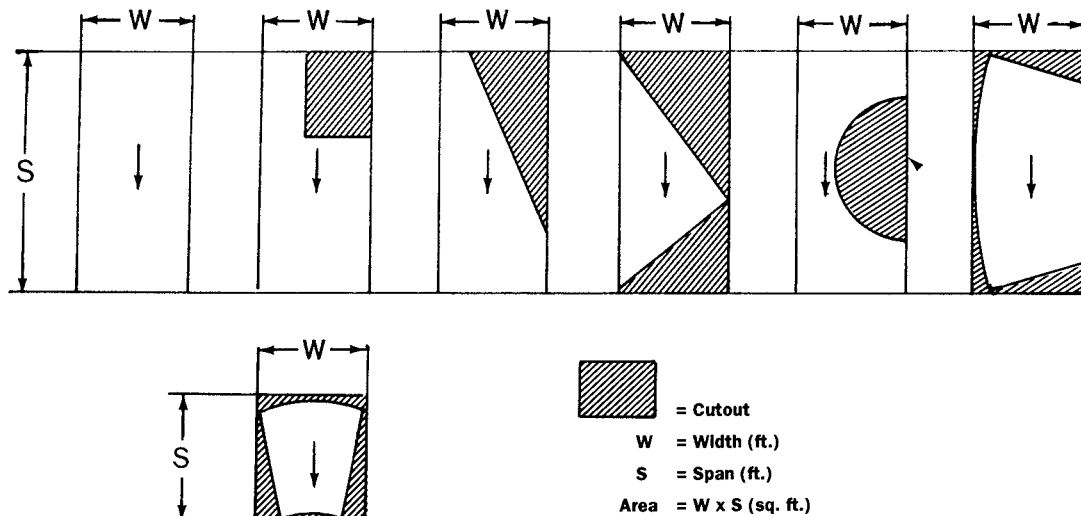
If required by the Buyer, the Seller shall submit to the Buyer three (3) prints or one reproducible paper copy of detailed drawings in outline form for the latter's review. The Buyer shall return one copy marked with his approval or desired changes. Should changes be required which involve work not called for in the original construction plans and specifications, the Seller shall have the right to charge extra for the engineering work required to make such changes. After all necessary corrections and/or changes are made, the drawings shall be re-submitted to the Buyer for his final review. The Seller shall not proceed with any shop work until drawings are finally approved.

3.4 Installation Drawings

If requested, the Seller shall furnish to the Buyer a maximum of four sets of prints or one reproducible paper copy of all installation drawings.

4. QUANTITY MEASUREMENTS

- 4.1 Quantity measurements for gratings ordered to specific dimensions without drawings, shall be based on span times width of each panel, with no deduction made for cutouts.
- 4.2 Final calculated grating quantities supplied from drawings shall be on the basis of gross area measured center to center of supports, or back to back of supporting angles or channels, or overall dimensions of grating, whichever is larger, with no deduction for clearances. Allowances for cutouts shall be determined as follows:
- Deductions in area for circular cutouts will be allowed only when the diameter of the cutout exceeds 3' 6" (1.1 m). The deduction allowance will be equal to one-half the square of the diameter of the cutout.
 - Deductions in area for cutouts other than circular will be allowed only when the cutout area exceeds nine (9) square feet (one (1) square meter).
 - No deductions will be allowed for any triangular segment or corners of gratings wasted in skew cuts.
 - For special applications, such as (but not limited to) containment areas in nuclear power plants, the final grating quantities shall be the total gross area of all the pieces furnished with no allowance for cutouts. See the following sketches.



- 4.3 Measurement of cuts shall be on the basis of a minimum of one (1) lineal foot (0.3 m) per panel. Any cut in excess of one (1) lineal foot (0.3 m) shall be measured to the next higher lineal foot (0.3 m). (See diagram at the right.)
- 4.4 Measurement of bandings, toe plates and nosings shall be on the same basis as that of cuts, as defined in 4.3.

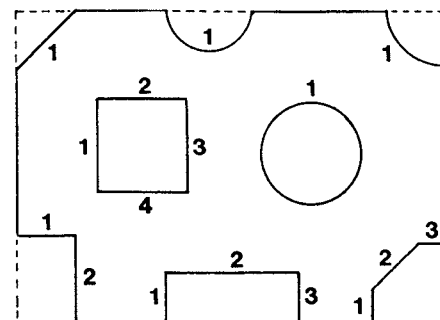


Diagram showing number of cuts required

5. CHANGES IN SCOPE OF CONTRACT

- 5.1 If at any time during the course of the work, the Buyer orders changes made which require materials and/or labor not called for in the original bidding plans, the cost of making such changes shall be paid by the Buyer at a price to be agreed upon.

6. FIELD WORK

- 6.1 The Seller shall not be responsible for taking actual measurements of construction work in the field.
- 6.2 Backcharges for field work of any kind are not acceptable without prior written authorization by the grating supplier.

7. BACKCHARGES

- 7.1 Upon discovery of unsatisfactory material, the Buyer shall immediately notify the Seller.
- 7.2 The Seller shall acknowledge receipt of the Buyer's complaint and initiate an investigation.
- 7.3 The Seller shall be given the opportunity to inspect the material PRIOR TO ANY CORRECTIVE WORK BEING DONE.
- 7.4 Seller is responsible for providing grating in accordance with approved drawings and specifications. Seller is not responsible for field changes, drawing changes not received and approved by Seller prior to grating fabrication, improper fabrication and/or erection of supporting members.
- 7.5 If the investigation and inspection confirm errors in Seller fabrication, the Seller agrees to repair and/or replace defective material at no charge to the Buyer.

GLOSSARY OF TERMS

Commonly used in the Industry

ANCHOR — A device by which grating is attached to its supports.

BAND — A flat welded to a side or end of a grating panel, or along the line of a cutout, and extending neither above nor below the bearing bars.

Load-carrying Band: A band used to transfer the load between bearing bars.

Trim Band: A band which carries no load, but is used chiefly to improve appearance.

BEARING BARS — Load-carrying bars made from steel strip or slit sheet or from rolled or extruded aluminum and extending in the direction of the grating span.

BEARING BAR CENTERS — The distance center to center of the bearing bars.

CARRIERS — Flats or angles which are welded to the grating panel and nosing of a stair tread and are bolted to a stair stringer to support the tread.

CLEAR OPENING — The distance between faces of bearing bars in a rectangular grating, or between a bent connecting bar and a bearing bar in a riveted grating.

CROSS BARS — The connecting bars, made from steel strip, slit sheet, or rolled bars, or from rolled or extruded aluminum, which extend across the bearing bars, usually perpendicular to them. They may be bent into a corrugated or sinuous pattern and, where they intersect the bearing bars, are welded, forged or mechanically locked to them.

CROSS BAR CENTERS — The distance center to center of the cross bars.

CURVED CUT — A cutout following a curved pattern.

CUTOUT — An area of grating removed to clear an

obstruction or to permit pipes, ducts, columns, etc. to pass through the grating.

FINISH — The coating, usually paint or galvanizing, which is applied to the grating.

GRATING — An open grid assembly of metal bars, in which the bearing bars, running in one direction, are spaced by rigid attachment to cross bars running perpendicular to them or by bent connecting bars extending between them.

HINGED PANELS — Grating panels which are hinged to their supports or to other grating parts.

I-BAR — An extruded aluminum bearing bar having a cross sectional shape resembling the letter "I".

LENGTH — Refer to *Span of Grating*.

LOAD-CARRYING BAND — see Band

NOSING — A special L-section member serving as the front or leading edge of a stair tread, or of grating at the head of a stair.

PRESSURE-LOCKED GRATING — Pressure-locked means bearing bars are locked in position by cross bar deformation instead of riveting or welding.

Several proven methods are:

- Expansion of an extruded or drawn tubular cross bar;
- Extruded cross bar deformed or swaged between bearing bars;
- Press assembly of rectangular cross bars into slotted bearing bars.

RADIALLY CUT GRATING — Rectangular grating which is cut into panels shaped as annular segments, for use in circular or annular areas.

RETICULINE BAR — A sinuously bent connecting bar extending between two adjacent bearing bars, alternately contacting and being riveted to each.

REVERSIBLE GRATING — Grating so constructed that it may be installed either side up, with no difference in appearance or carrying capacity.

RIVET CENTERS — The distance center to center of rivets along one bearing bar.

RIVETED GRATING — Grating composed of straight bearing bars and bent connecting bars, which are joined, at their contact points, by riveting.

SERRATED GRATING — Grating which has the top surfaces of the bearing bars or cross bars, or both, notched.

SPAN OF GRATING — The distance between points of grating support, or the dimension of the bearing bars in this direction.

STRAIGHT CUT — That portion of the cut edge or cutout of a grating which follows a straight line.

SWAGING — A method of altering the cross-sectional shape of a metal bar by pressure applied through dies.

TOEPLATE — A flat bar attached flat against the outer edge of a grating or rear edge of a tread, and projecting above the top surface of grating or tread to form a lip or curb.

TREAD — A panel of grating having carriers and nosing attached by welding, and designed specifically to serve as a stair tread.

TRIM BAND — see Band

WELDED GRATING — Grating in which the bearing bars and the cross bars are joined at all of their intersections by either a resistance weld or conventional hand welding.

A resistance weld is obtained by the heat produced by the resistance of the material to the flow of electric current causing the material to become plastic. At this point, the pressure on the cross bar is rapidly increased causing the cross bar to penetrate the bearing bar so that they are fused together.

WIDTH — The overall dimension of a grating panel, measured normal to the bearing bars.

